

Current Initiatives Map

The Current Initiatives Map gives a brief snapshot of the different efforts within the lower-income system, highlighting how each programme helps lower-income families can achieve upward social mobility. This map is focused on families with children and with new programmes being developed, this list is not exhaustive.

How to use this map:

- Get to know the key players and their roles within the system.
- Look for initiatives and identify potential opportunities for partnership and collaboration.
- Identify potential gaps and steer resources to these areas.

How to read the Current Initiatives Map

To use this map effectively, begin with identifying the quality-of-life outcomes that can improve social mobility for lower-income families. Then, examine the organisations already working in those areas and explore their initiatives.

The inner circle of issues provides insight into the challenges that lower-income families face within that specific area and highlights the needs that must be addressed. By understanding these challenges and needs, we can better determine the most effective initiatives to pursue and support in our efforts to promote social mobility.

5 AREAS OF FOCUS

These are the five areas of focus which the Colabs series is hoping to address in order to increase social mobility for lower-income families.

HOME

Secure and stable home environment, sufficient space, strong family ties.

FINANCE

Stable and fair employment, ability to accumulate financial capital and cope with debt.

EDUCATION

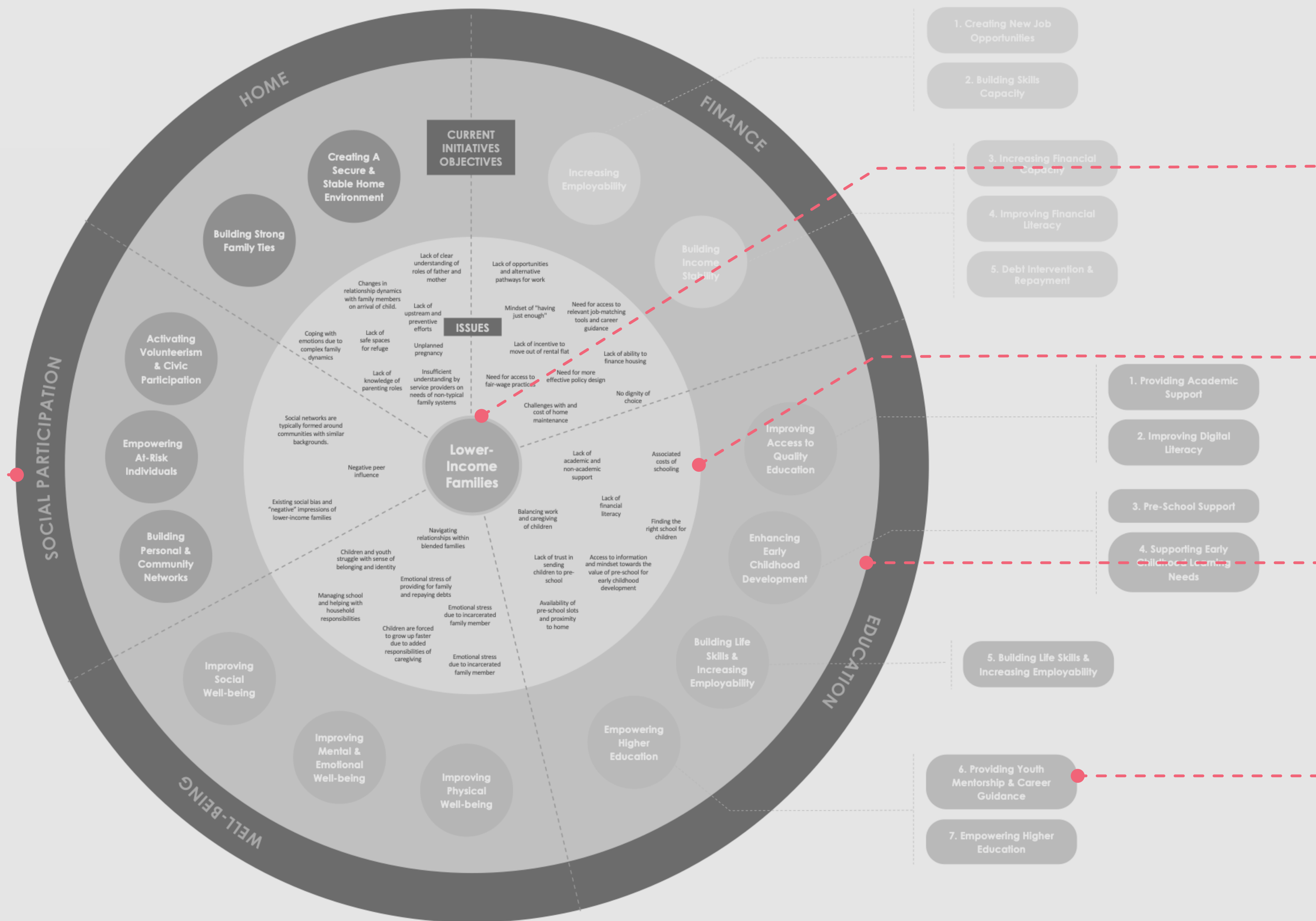
Accessible and quality education, CCAs and social-emotional competencies education.

WELL-BEING

Physical, social and emotional well-being.

SOCIAL PARTICIPATION

Informal and formal social support network, peer-to-peer learning and bonds in schools and work.



PERSONA
The key persona of this Colabs series is the lower-income family.

ISSUES
The needs layer describes the key issues that lower-income families face in each area of focus.

CURRENT INITIATIVES OBJECTIVES
These are key objectives in which organisations are aiming to reach with their initiatives.

CURRENT INITIATIVES CLUSTERS
These are ways in which organisations are trying to increase social mobility of lower-income families.

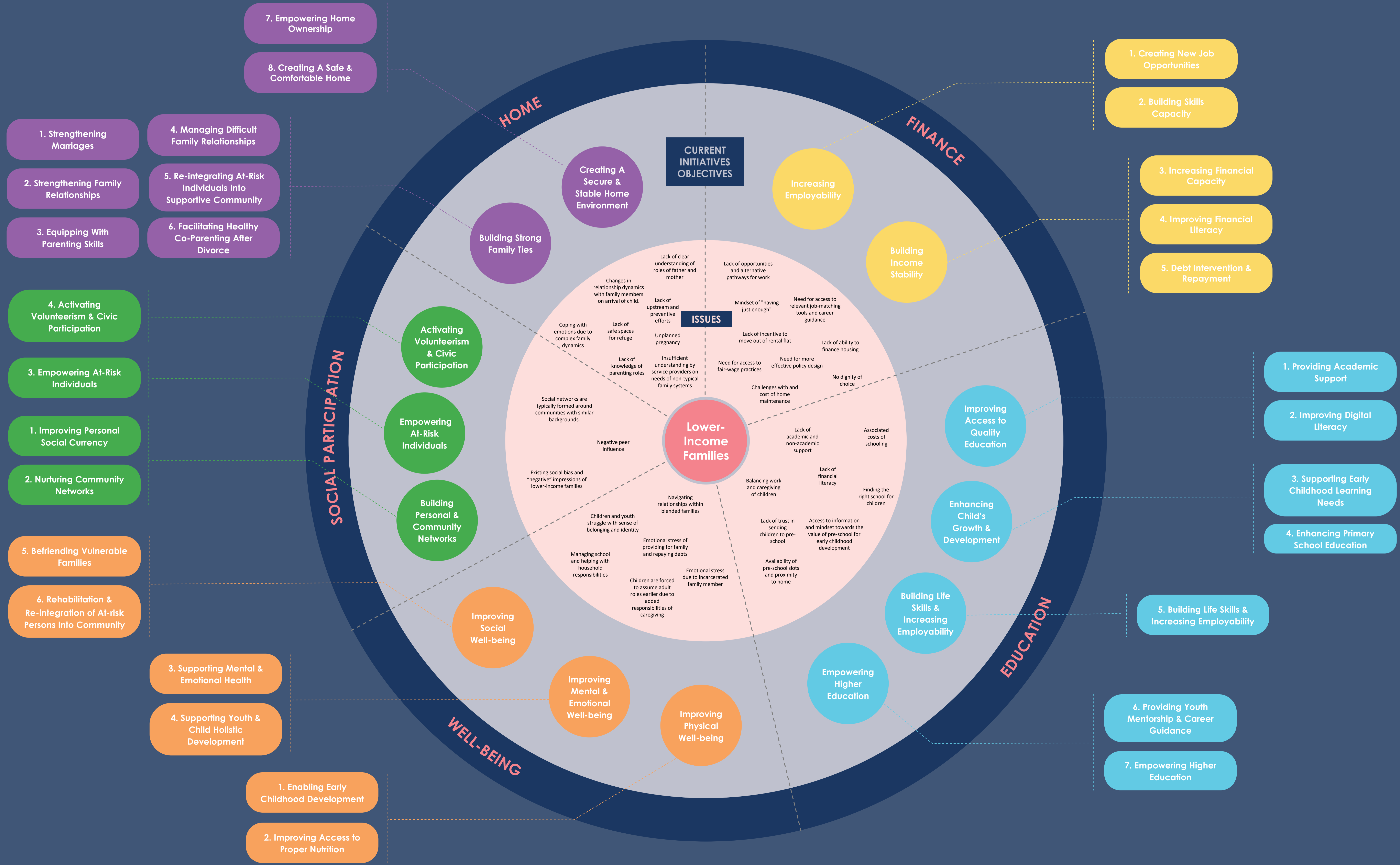
Current Initiatives Map

This Current Initiatives Map shows the ongoing efforts to support lower-income families to achieve social mobility and identifies the stakeholders involved.

By placing families at the centre and visualising the initiatives and issues to the five key areas of focus, we can assess which areas are better served and where gaps in the system exist. This allows us to identify opportunities to bridge those gaps and better support these families in achieving social mobility.

The Current Initiatives Map is not an exhaustive list of initiatives.

Share with us other initiatives that have yet to be included in this map:
<https://forms.gle/FCuL8y38tuVW64U88>



Current Initiatives Map

STAKEHOLDER LAYER

This map captures how each stakeholder is creating impact within the lower-income families system and their area of focus. Stakeholders could hold multiple interests and hence are appear in more than one area of focus.

5 FOCUS AREAS TO IMPROVE SOCIAL MOBILITY OF LOWER-INCOME FAMILIES

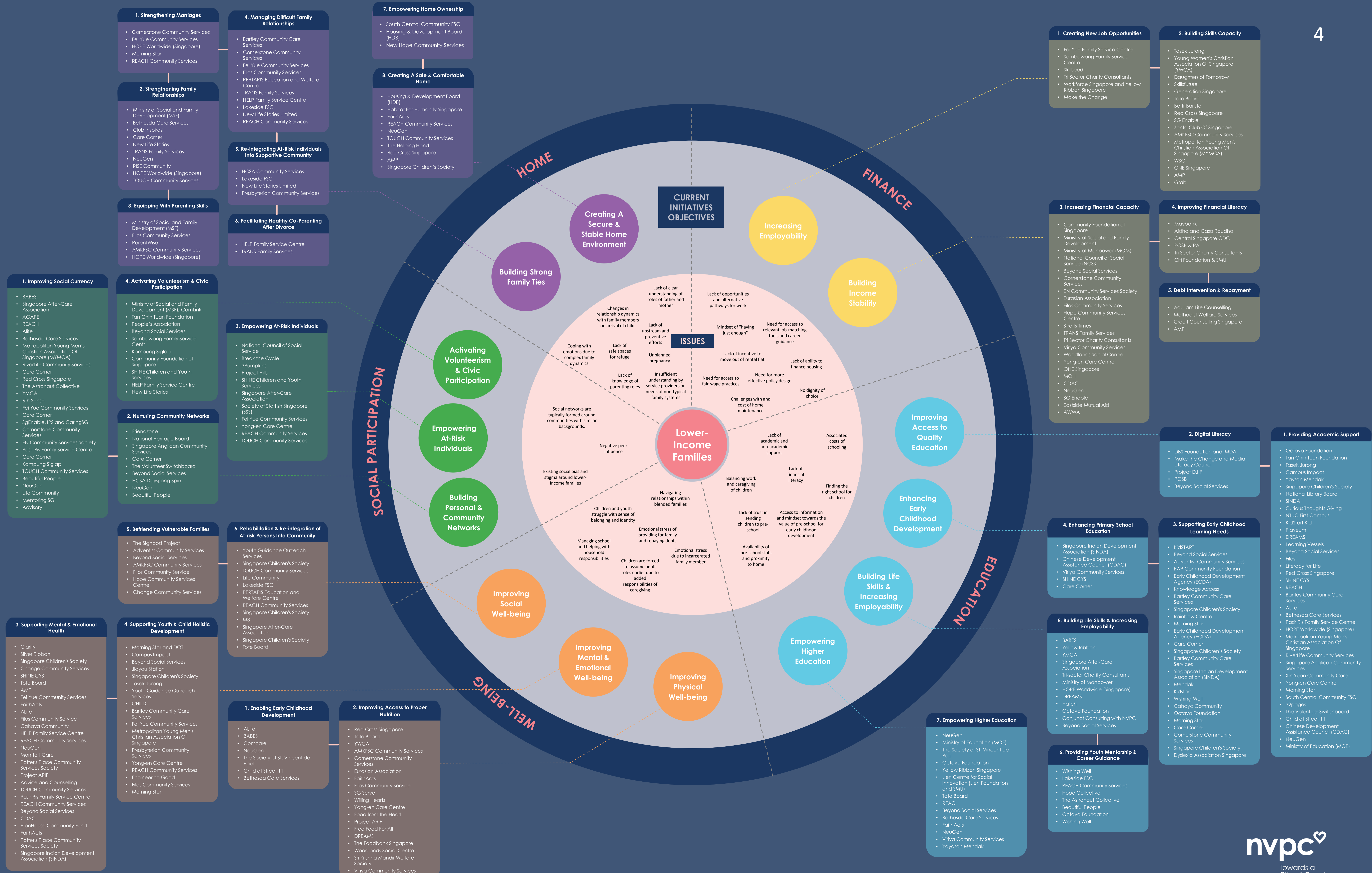
HOME
Secure and stable home environment, sufficient space, strong family ties.

FINANCE
Stable and fair employment, ability to accumulate financial capital and cope with debt.

EDUCATION
Accessible and quality education, CCAs and social-emotional competencies education.

WELL-BEING
Physical, social and emotional well-being.

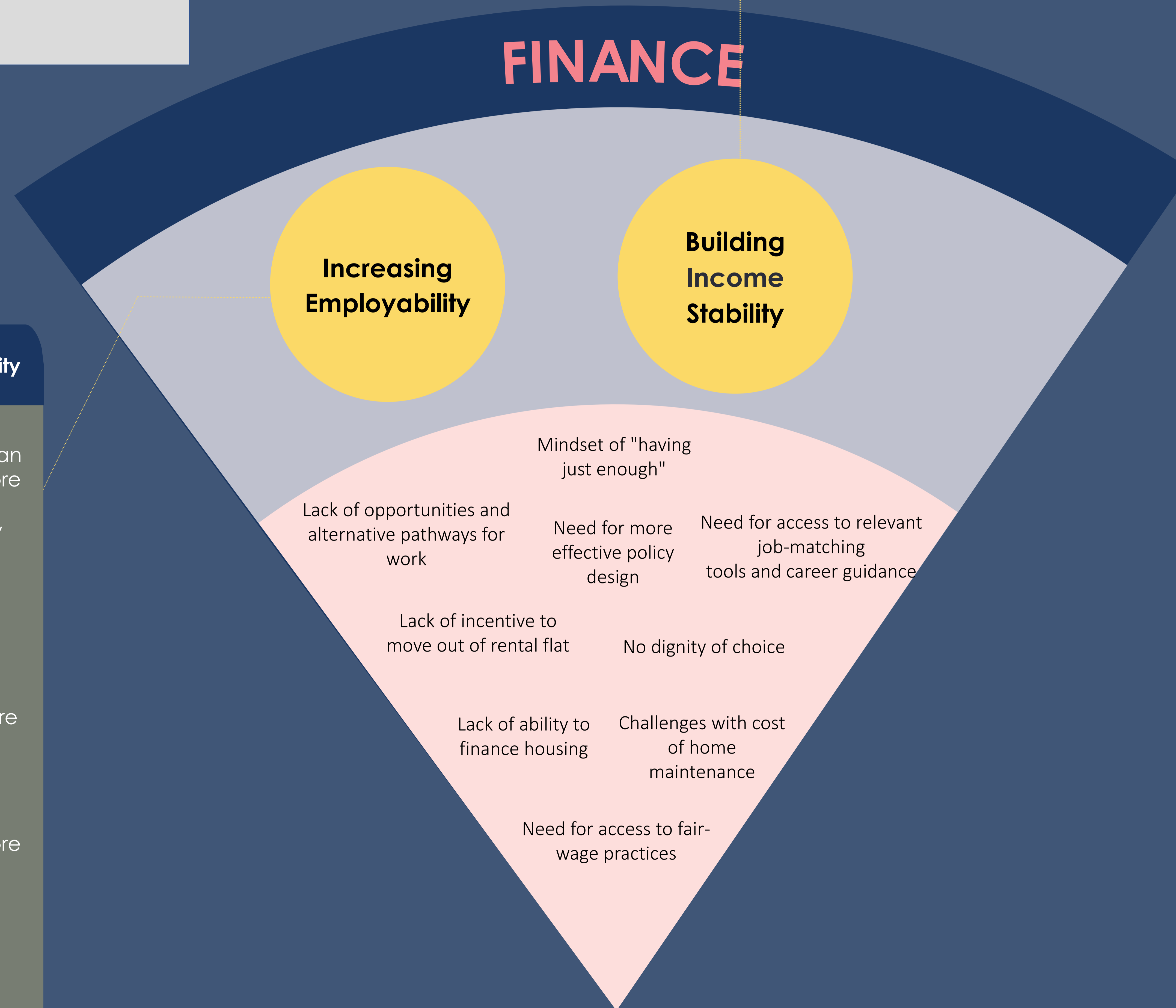
SOCIAL PARTICIPATION
Informal and formal social support network, peer-to-peer learning and bonds in schools and work.



CURRENT INITIATIVES MAP

Finance

This refers to the ability to accumulate financial capital, manage debt, and have access to fair and inclusive employment opportunities.



- ### 1. Creating New Job Opportunities
- Fei Yue Family Service Centre
 - Sembawang Family Service Centre
 - Skillseed
 - Tri Sector Charity Consultants
 - Workforce Singapore and Yellow Ribbon Singapore
 - Make the Change

- ### 2. Building Skills Capacity
- Tasek Jurong
 - Young Women's Christian Association Of Singapore (YWCA)
 - Daughters of Tomorrow
 - Skillsfuture
 - Generation Singapore
 - Tote Board
 - Bettr Barista
 - Red Cross Singapore
 - SG Enable
 - Zonta Club Of Singapore
 - AMKFSC Community Services
 - Metropolitan Young Men's Christian Association Of Singapore (MYMCA)
 - WSG
 - ONE Singapore
 - AMP
 - Grab

- ### 3. Increasing Financial Capacity
- Community Foundation of Singapore
 - Ministry of Social and Family Development
 - Ministry of Manpower (MOM)
 - National Council of Social Service (NCSS)
 - Beyond Social Services
 - Cornerstone Community Services
 - EN Community Services Society
 - Eurasian Association
 - Filos Community Services
 - Hope Community Services Centre
 - Straits Times
 - TRANS Family Services
 - Tri Sector Charity Consultants
 - Viriya Community Services
 - Woodlands Social Centre
 - Yong-en Care Centre
 - ONE Singapore
 - MOH
 - CDAC
 - NeuGen
 - SG Enable
 - Eastside Mutual Aid
 - AWWA

- ### 4. Improving Financial Literacy
- Maybank
 - Aidha and Casa Raudha
 - Central Singapore CDC
 - POSB & PA
 - Tri Sector Charity Consultants
 - Citi Foundation & SMU

- ### 5. Debt Intervention & Repayment
- Adullam Life Counselling
 - Methodist Welfare Services
 - Credit Counselling Singapore
 - AMP

CURRENT INITIATIVES MAP

Details of Initiatives and Organisations

FINANCE

1. Creating New Job Opportunities

**Fei Yue Family Service Centre
Threads of Courage**
A community project that targets individuals who are unable to secure permanent employment due to health, family circumstances, and other causes. This project equips individuals with sewing skills and enables them to earn a supplementary income from the sale of their hand-sewn products.
<https://www.fairmarch.com/vendors/threads-of-courage/about/>

**Knowledge Access
Work Placement Programme**
For parents of beneficiaries - a range of job opportunities such as educators and support staff within our Busy Bees Singapore network.
<https://knowledgeaccess.org/programmes/>

**Sembawang Family Service Centre
Sowers Project**
A community project that empowers home-bound women, from low-income disadvantaged backgrounds, with an avenue to earn money and supplement their family income by sewing items to sell with upcycled material.
<https://www.sfc.org.sg/family-service-centre>

**Skillseed
Resilience Trail**
Provides employment for individuals from underprivileged backgrounds and platform to share their voices and stories.
<https://www.skillseed.sg/resilience-trails>

**Tri Sector Charity Consultants
Singapore Social Impact Guarantee – Enhancing Youth Support Programme**
This programme helps to reintegrate youths-at-risk into society through education or employment. The SIG offers impact-minded donors and government funders a money-back guarantee on their funding. YMCA (Service Provider), TL Whang Foundation (Donor), The Lorinet Foundation (Guarantor)
<https://trisector.org/our-project/singapore-social-impact-guarantee-enhancing-youth-support-programme/>

**Workforce Singapore and Yellow Ribbon Singapore
Employment Support for Ex-Offenders – Individuals**
This programme aims to help ex-offenders become job-ready and prepare them for re-integration into the workforce.
<https://www.wsg.gov.sg/programmes-and-initiatives/employment-support-for-employers-to-hire-ex-offenders.html>

**Make the Change
Younite**
Platform for digital skills and projects to enable and promote talents from marginalised communities (e.g., PWD) for better income opportunities in the creative gig community.
<https://www.younite.sg/>

Project Cookoh
Empowers low-income women in Jalan Kukoh to become entrepreneurs.
<https://projectcookoh4.wordpress.com/>

2. Building Skills Capacity

**Tasek Jurong
Beacon of Life (BOL)**
Provides funding to our members for further education and skills upgrading. Collaborates with external organisations to seek relevant and meaningful job opportunities for members.
<https://tasekjurong.org/bol/>

**Young Women’s Christian Association Of Singapore (YWCA)
Empowering Mums**
The 10-week programme equips back-to-work mums from low-income families with life and work skills to improve their employability from a holistic view. Meals, transport and childminding services provided throughout the sessions.
<https://ywca.org.sg/empowerment/empowering-mums/>

**Daughters of Tomorrow
Power Up Online**
Facilitates workplace preparedness and employment opportunities for women from underprivileged families.
<https://daughtersoftomorrow.org/power-up-online/> +

Transformation Fund
Applicant will be awarded a maximum of \$10,000 per person should the application be successful for upskilling.
<https://daughtersoftomorrow.org/get-support/transformation-fund-application/>

**Skillsfuture
Workforce Skills Qualifications (WSQ)**
National credential system for training and certifying skills and competencies for upskilling, provides opening credit of \$100 for individuals aged 25 and above
<https://www.ssg.gov.sg/wsqa.html>

**Generation Singapore
#SheEmployed**
Employability programme to empower women through upskilling, to advance careers or gain better employment opportunities. Provides customized career coaching, mentorship and well-being support.
<https://singapore.generation.org/programs/she-employed/#>

**Tote Board
Tote Board Non-Profit Sector Transformation Initiative**
Tote Board established a \$10m grant over five years to support NPOs in our key sectors in their transformation journeys to improve their organisational capabilities.
<https://www.toteboard.aov.sg/grants/what-toteboard-cares-about#Strategic%20Focuses>

**Bettr Barista
The Bettr Holistic Training Programme**
A 4 month, full-time, work & study programme for marginalised groups aged 16-50.
<https://www.bettr.group/holistic-training>

**Red Cross Singapore - Centre for Occupational Learning and Employment
Employability Training**
Provides practical support through soft-skills training, career coaching, and job recommendations to eligible participants. Enhances Employability & Livelihoods of vulnerable groups by offering basic employability training and job facilitation to LIF.
<https://www.redcross.sg/get-assistance/employability-support.html>

**SG Enable Ltd
Temasek Trust-CDC Lifelong Learning Enabling Fund**
This fund is set up by Temasek Trust and the five Community Development Councils (CDCs) and is administered by SG Enable. Each eligible adult with disability can apply for up to S\$1,000 to defray course-related fees and/or learning support devices and services.
<https://centralsingapore.cdc.gov.sg/programmes/soc-ia-emotional-wellness/temasektrust-cdc-lifelonglearning-fund/>

**Zonta Club Of Singapore
Project Pari**
Provides young women (secondary school) from lower-income families with financial assistance and learning opportunities beyond school, e.g., life skills workshops and personal enrichment activities.
<https://zontasingapore.org/service-advocacy/service/project-pari/>

**AMKFSC Community Services
Bakery Hearts**
Programme that aims to provide women from low-income families with the opportunity to supplement their household income and prepare them for work. Allows them to acquire baking and social skills.
<https://www.amkfsc.org.sg/what-we-do/family-services/family-service-centres/ang-mo-kio-fsc>

**Metropolitan Young Men’s Christian Association Of Singapore
M.Y AIM**
Mentorship program where youths develop a career action plan and debunk any limiting beliefs.
<https://www.mymca.org.sg/programmes?type=M.Y%20AIMspace%20-%20M.Y%20AIM>

M.Y Internship Programme
Equips and empower youths through providing a holistic professional internship and career counseling experience.
<https://www.mymca.org.sg/programmes?type=M.Y%20Internship>

M.Y Academy
Equips youths and industry professionals with critical skills for young people to thrive in life and especially at the workplace
<https://www.mymca.org.sg/programmes?type=M.Y%20Academy>

**WSG
herCareer Initiative**
The initiative supports women who are keen on returning to work with more career opportunities and resources.
<https://www.wsg.gov.sg/hercareer.html>

**ONE Singapore
The ONE Livelihoods Fund**
The fund promotes livelihoods, self-reliance, entrepreneurship and training to reduce inequalities and foster well-being for vulnerable individuals and families in Singapore.
<http://onesingapore.org/take-action/livelihoods-fund/>

**AMP
Adopt A Family**
Adult family members undergo skills training either in economically-viable areas to increase their employability or in setting up a home-based business as an alternative source of income. School-going children under AFYS are enrolled into tuition and enrichment programmes to enhance their academic development. Parental education programmes and family life skills workshops are also conducted for parents under AFYS to equip them with the knowledge and skills to improve the quality of their family life.
<https://www.amp.org.sg/families/tab-service-1>

**Grab
Grab Academy**
Covers all aspects of drivers’ training needs – from onboarding, personal and professional development to career transition.
<https://www.grab.com.sg/press/social-impact-safety/grab-introduces-new-financial-literacy-programme-as-part-of-the-grabacademy-initiative-for-driver-and-delivery-partners/>

3. Increasing Financial Capacity

**Community Foundation of Singapore
Sayang Sayang Fund**
Delivers financial support to the affected communities in the fastest and most effective way during the COVID-19 pandemic.
<https://www.cf.org.sg/sayangsayangfund/>

**Ministry of Social and Family Development (MSF)
SSO Financial Assistance Schemes**
Each SSO assesses eligibility and administer Comcare assistance whether short- or medium-term.
<https://www.msf.gov.sg/Comcare/Pages/Short-to-Medium-Term-Assistance.aspx>

**Ministry of Manpower (MOM)
Silver Support Scheme**
Provides a quarterly cash supplement to seniors who had low incomes during their working years and now have less in retirement.
<https://www.silversupport.gov.sg/>

**National Council of Social Service (NCSS)
SHARE as One Programme**
Under the SHARE as One programme, the Government will provide dollar-for-dollar matching for any additional donations through SHARE. The rest of the matching grant will go to a fund to be managed by Community Chest to benefit the social service sector.
<https://www.ncss.gov.sg/our-initiatives/share-as-one>

Courage Fund
Community Chest rallied the community to provide relief and support to those affected by the current COVID-19 situation. Beneficiaries include LIF and healthcare workers involved in frontline work of Covid19 relief operations.
<https://www.ncss.gov.sg/our-initiatives/the-courage-fund>

**Beyond Social Services
Bakers Beyond**
Seasonal income-generating bake sales.
<https://www.beyond.org.sg/support-2/>

Family Assistance Fund
Designated fund to provide a sense of stability for families who are over-stressed, under-supported and experiencing financial hardship.
<https://www.beyond.org.sg/support-2/>

**Cornerstone Community Services
Cornerstone Development Initiatives Redeemed**
Transport allowance scheme (for 3 months) aims at helping ex-offenders who have secured employment integrate back into society as they embark on a new job upon release.
<https://www.cornerstoneservices.org.sg/financial-aid>

**EN Community Services Society
Financial Support**
Targets individuals and families facing diverse issues relating to financial issues, unemployment, health concerns, addictions, single-parenting, juvenile delinquency and family violence. Aids them through basic financial assistance, referral Services, basic financial counselling, food vouchers, workshops, and food rations distribution programme.
<https://www.ecss.org.sg/our-services/social-and-community-care/financial-assistance>

**Eurasian Association
Referral Centre**
Basic Financial Assistance & Beyond Financial Assistance to settle one-off payments) for needy households.
<https://www.eurasians.org/families>

**Filos Community Services
SG Cares - Gajek Medical Transport Subsidy Scheme 2019 - 2021**
Reduces the financial burden of eligible individuals who require transportation for medical visits. The scheme is coordinated and administered in collaboration with the Kembangan Chai-Chee Social Team and other community partners.
<https://www.filos.org/community-engagement>

**Hope Community Services Centre
Financial Aid Program**
Provides financial help to needyfamilies that are less mobile by providing monthly grocery items or subsidizing utilities or medical fees over a period of time.
<https://www.hopeccs.org/programs.html>

**Straits Times
The Straits Times School Pocket Money Fund**
Provides monthly financial assistance to children and youth in primary school, secondary school and tertiary institutions, who are from families whose per capita gross monthly income is not more than \$690.
<https://www.spmf.org.sg/about>

**TRANS Family Services
Casework & Counselling**
Counselling for families with financial difficulties.
<https://www.trans.org.sg/services-famfsc>

**Tri Sector Charity Consultants
Family Empowerment Programme (FEP)**
The pilot programme aims to further research the needs of families receiving AWWA support services and provide income stability to these households in chronic poverty with the aim of supporting them to focus on longer-term education, skills-training and employment (ESE) goals for their families.
<https://trisector.org/our-project/awwa-family-empowerment-program/>

**Viriya Community Services
Viriya Gap Fund**
The fund focuses on meeting basic needs of our clients and also seek to support educational needs and key development opportunities for those from disadvantaged background to maximize their potential. For families receiving casework or counselling support from Viriya and have gross per capita monthly household income of \$650 and below.
<https://viriya.org.sg/our-services/financial-assistance-programme/viriya-childrens-education-fund/>

**Woodlands Social Centre
Welfare Assistance Schemes**
The centre provides families with short to mid-term assistance to help reduce some of the struggles they face during difficult times.
<https://www.eurasians.org/ourservices/#Welfare>

**Yong-en Care Centre
Financial Assistance**
This emergency relief fund was set up to help low-income breadwinners who have lost their jobs, had their income severely disrupted or faced a personal income loss due to COVID-19. Financial support of \$500 to \$1000 per month is provided for a period ranging from 3 to 6 months.
<https://www.yong-en.org.sg/care-assistance/>

**ONE Singapore
ONE Emergency Fund**
The fund disburses financial and in-kind assistance to low-income individuals and families in Singapore who urgently need help (those who need assistance, but cannot find it elsewhere, or cannot obtain it in time).
<https://onesingapore.org/take-action/emergency-fund/>

**MOH
Medifund**
Medifund helps needy Singapore citizens who cannot pay their medical bills.
<https://www.moh.gov.sg/cost-financing/healthcare-schemes-subsidies/medifund>

**CDAC
SFCCA Hardship Assistance Fund Scheme**
Short Term financial assistance.
<https://www.cdac.org.sg/supporting-families/hardship-assistance-scheme/>

CDAC Family Assistance Programme
Supporting low-income families to cope with their basic living and/or education needs of their children and facilitate them to become more resilient and self-reliant.
<https://www.cdac.org.sg/supporting-families/cdac-family-assistance-programme/supervised-homework-group/>

Worker Support
Provides comprehensive assistance to workers through case management and close cooperation with government agencies, including employment and skills improvement services.
<https://www.cdac.org.sg/support-for-workers-2/>

**NeuGen
Bus Fund**
Aims to reduce the financial expenses and stressors on families so that children can attend school and commute without worry.
<https://www.neugen.org.sg/neu-empowerment-model/>

**SG Enable
The Assistive Technology Fund (ATF)**
Provides individuals with a subsidy of up to 90% of the cost of assistive technology devices, subject to a lifetime cap of \$40,000. The subsidy amount is determined according to the applicant's household gross monthly income per person.
<https://www.enablingguide.sg/im-looking-for-disability-support/assistive-technology/assistive-technology-fund>

**Eastside Mutual Aid
Mutual Aid**
A ground-up initiative for the community to provide mutual aid to each other and share resources. Financial aid is one of the request that the group facilitates, among others.
<https://www.instagram.com/eastidemutualaid/?hl=en>

**AWWA
Family Empowerment Programme**
Pilot programme which researches needs of families receiving AWWA support. Provides income stability to households in chronic poverty aiming to empower them in longer-term education, skills training and employment (ESE)
<https://trisector.org/our-project/awwa-family-empowerment-program>

FINANCE

4. Improving Financial Literacy

Maybank
Maybank Savers Programme @ North East CDC
Maybank Savers Programme matches every dollar saved with S\$2 to help workers who have lost their jobs build emergency funds in times of uncertainty. Beneficiaries are invited to attend exclusive financial literacy workshops to gain insights into effective financial management.
<https://www.maybank2u.com.sg/en/personal/saveup/save-up-programme.page>

Aidha and Casa Raudha
My Dollars & Cents
Financial savings and literacy programme for lower-income women.
<https://centralsingapore.cdc.gov.sg/programmes/financial-and-social-wellness/cashup-family-savers>

Central Singapore CDC
CashUP Family Saver
CashUP Family Savers is a financial literacy workshop with a matched savings component sponsored by Maybank to encourage low-income families to save for a better future.
<https://centralsingapore.cdc.gov.sg/programmes/financial-and-social-wellness/cashup-family-savers>

POSB & PA
POSB Passion Kids Fund
Since the fund's inception, we have supported some 780,000 children, including beneficiaries from low-income families, children with disabilities, and youths at risk, through more than 198 programmes that contribute towards social capital and community development.
<https://www.posb.com.sg/personal/run-for-kids>

Tri Sector Charity Consultants
Singapore Social Impact Guarantee – Enhancing Youth Support Programme
This programme helps to reintegrate youths-at-risk into society through education or employment. The SIG offers impact-minded donors and government funders a money-back guarantee on their funding. YMCA (Service Provider), TL Whang Foundation (Donor), The Lorinet Foundation (Guarantor).
<https://trisector.org/our-project/singapore-social-impact-guarantee-enhancing-youth-support-programme/>

Citi Foundation & SMU
Financial Literacy Program for Young Adults
A financial education program catering to young adults between the ages of 15 and 30.
<https://skbi.smu.edu.sg/cfs/about/student-council>

5. Debt Intervention & Repayment

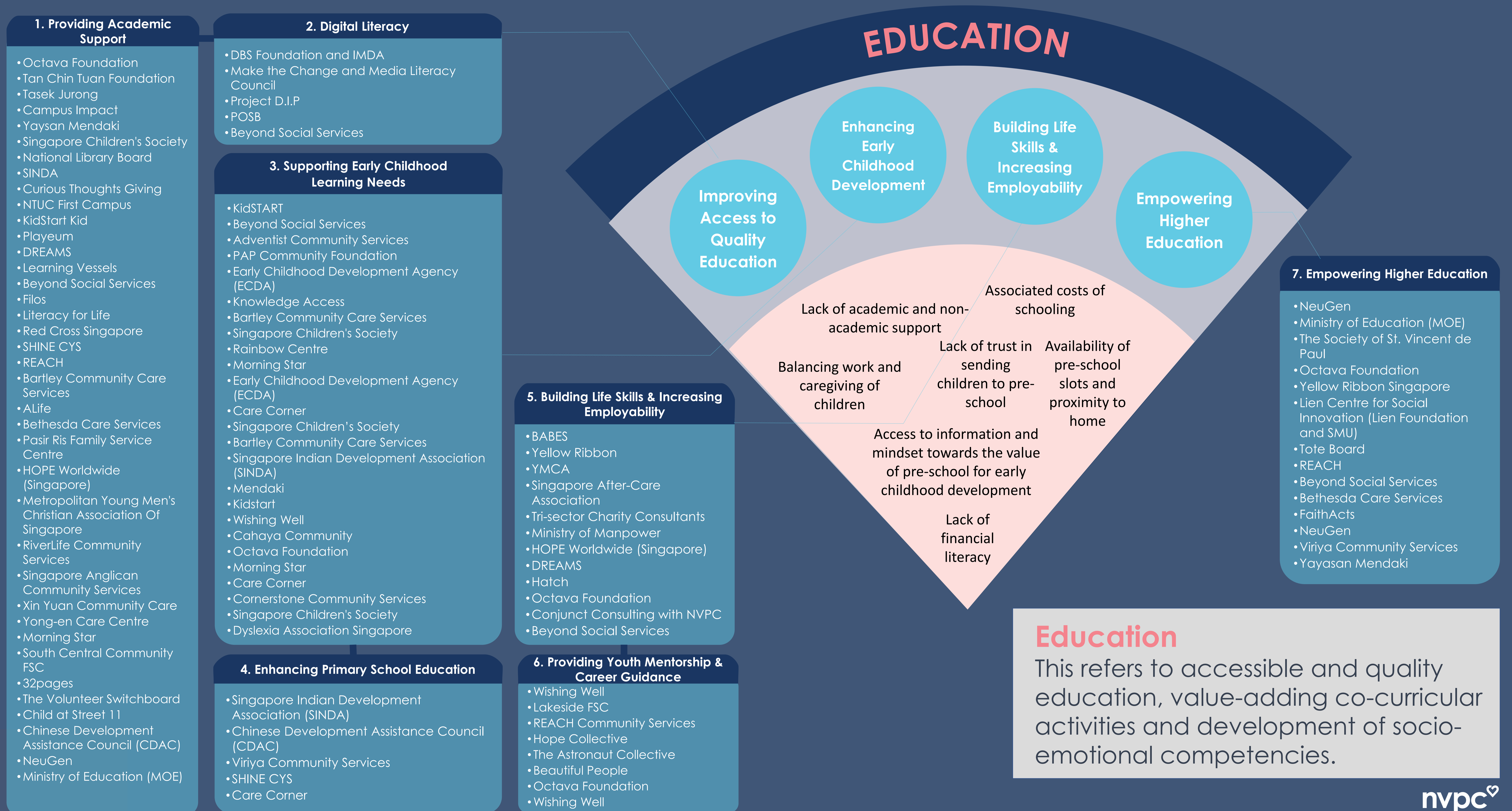
Adullam Life Counselling
Counselling
Provides support and practical help for people facing debt issues.
<https://www.adullam.org.sg/aboutus>

Methodist Welfare Services
Family Development Programme
Debt and savings matching for families, encouraging asset building and saving.
<https://mws.sg/centre-location/mws-family-development-programme/>

Credit Counselling Singapore
Credit Counselling Assistance
Promotes the responsible use of credit and provides advisory services to debt-distressed individuals.
<https://ccs.org.sg/about-us/>

AMP
Debt Advisory Centre
A one-stop centre that assists individuals facing debt problems through a three-pronged approach: advice, educate and research. It offers support group sessions and financial literacy workshops.
<https://www.amp.org.sg/debtors/>

CURRENT INITIATIVES MAP



CURRENT INITIATIVES MAP

Details of Initiatives and Organisations

EDUCATION

1. Providing Academic Support

National Library Board kidsREAD
kidsREAD is a nationwide reading programme aimed at cultivating the love of reading among children aged 4 to 8 who are from less privileged families. Each session spans 1 hour where children are engaged in a fun and interactive programme by trained volunteers.
<https://childrenandteens.nlb.gov.sg/services/programmes/kidsread>

Filos Community Services Reading room
The Reading Room aims to support young children (4 - 9 years old) from vulnerable backgrounds in their reading skills. The programme runs online weekly, and it aims to cultivate the love of reading through storytelling that would give the children a good foundation before they enter primary school.
<https://www.filos.sg/article/Reading%20Room%20WMHD%20Oct%202021>

Little Sprouts Reading Programme
Aims to give children (4 to 6 years old) from families-in-need in the Kembangan-Chai Chee community phonics-based curriculum and uses interactive activities to inculcate a love for reading and build self-confidence.
<https://www.filos.sg/resources/ck/files/E-Newsletters/February%20Filos%20E-Newsletter.pdf>

Literacy for Life ReadAble
ReadAble has built a community library of over a thousand books for kids to freely access books at every reading level throughout the week. Through our BookDrop project, we set up conducive study spaces and mini-libraries in kids' homes.
<https://www.readablesg.com/>

Red Cross Singapore Family LifeAid
Provide food vouchers for vulnerable families, weekly home-based tuition based for children 9-12, home-based storytelling to engage children 4-8 to increase English literacy.
<https://www.redcross.sg/get-assistance/family-lifeaid.html>

Young Hearts Programme
Young Hearts Programme - A series of initiatives to give young children and adolescents from ages 4 - 12 in challenging circumstances a leg-up in life. Includes Stories For All, a reading programme, one-on-one Tuition, Mentorship opportunities, Holiday Enrichment programmes.
<https://www.redcross.sg/our-services/community-services/family-lifeaid.html>

Alife SpeakEasy
Speech and literacy programme for children (4 to 12 years old) from low-income households with speech, articulation and literacy issues.
<https://www.alife.org.sg/speakeasy>

Caterpillar Club
Character building enrichment programmes for children (4 to 12 years old), primarily from low-income and disadvantaged families (eg English Literacy, Youth Leadership, Natural Science).
<https://www.alife.org.sg/caterpillar-club>

NeuGen Bookworm Programme
Aims to ensure that children aged 5-6 years old are able to reach their literacy development milestones in reading, speech, and other language skills. This is done through phonics using stories and songs.
<https://www.neugen.org.sg/neu-empowerment-model/>

NTUC First Campus My First Skool
Programmes range from speech and other therapy support, small group lessons, social-emotional lessons, financial and to social assistance.
<https://www.myfirstskool.com/our-approach/programmes/>

Beyond Social Services LIFE – Learning Is Fun & Exciting
All learning activities for those aged 6 & above are coordinated under LIFE to impress on participants that Learning Is Fun & Exciting.
<https://www.beyond.org.sg/support-2/>

Learning Vessels Early Learning Programme
It is a weekly intervention-based, volunteer-championed Literacy and Numeracy programme for underprivileged children aged 6-7. It has been designed to benefit children with learning difficulties like dyslexia and developmental delay, as well as neurotypical children.
<https://www.learningvessels.com/early-learning-programme-elp>

REACH Youth and PAHEART-TO-HEART
A complimentary homework consultation service for Primary and Secondary school students from families residing in Rental Flats who need but cannot afford such tuition classes.
<https://www.rentalhearts.org/heart-to-heart-consultation-programme>

Bartley Community Care Services BCCS Tuition @ Bartley
Tutors journey with academically weaker Primary 1 to Secondary 5 students from disadvantaged families to develop their confidence.
<https://www.bccs.org.sg/tuition-services>

Xin Yuan Community Care Vision for Youth Programme
A holistic programme that aims to break the cycle of intergenerational poverty by providing academic assistance, mentoring and enrichment support to disadvantaged youths so they can realize their potential. Student beneficiaries are Primary and Secondary school levels from low-income families, many of whom are from single-parent households.
<https://www.xinyuan.org.sg/vision-for-youth-programme/>

RiverLife Community Services Limited ACES
Empowers P6's (pre-teens) from low-income families with academic coaching, mentoring and equipping them with life skills to reach greater potentials in their Secondary School journey.
<https://www.rcs.org.sg/programmes/>

SHINE CYS Reading Odyssey
The Reading Odyssey (RO) is a reading programme for children with low reading ability. The programme serves primary school children who are vulnerable by their social circumstances or unmet need.
<https://www.shine.org.sg/reading-odyssey>

Singapore Anglican Community Services Befrienders Clubs
A weekly 2-3 hour programme in primary schools for children to learn good values, benefit from mentoring and meaningful activities in a fun, learning environment free of charge, for underprivileged, marginalised and vulnerable children.
<https://citycomm.org.sg/services/befrienders-alumni-bfa/>

Yong-en Care Centre GROW Literacy Programme
Our tuition and GROW programmes support children and youths academically to promote literacy and equip them with a more level playing field to excel and research their full potential. For P3 – Tertiary Students (1st degree),Household Income must be no more than \$3250 or Per Capita Income no more than \$820 (which is lower).
<https://www.yong-en.org.sg/youth-children/>

Singapore Children's Society Yellow Brick Road
Provides children of inmates (7-12) with home-based tuition, case management, groupwork and bonding activities. It also engages caregivers through parenting workshops. It is supported by Yellow Ribbon Fund.
<https://www.childrensociety.org.sg/services/family-services>

Morning Star Student Care Centre
Our student care services support the needs of families who require supervision and guidance for their primary school-going children. Our children attend our centres during off-school hours between 1 pm and 6.30 pm on weekdays during the school term, and 7.30 am and 6.30 pm during school holidays.
<https://www.morningstar.org.sg/student-care/>

SINDA Project Guide
Project Guide provides homework support to primary and secondary students who require customised assistance in strengthening their conceptual understanding of core subjects and closing learning gaps.100% waiver of fees for SC/PR students on MOE FAS or PCI \$1000 and below.
<https://www.sinda.org.sg/education/project-guide/>

Cafe Excel
Cafe Excel is a place where students can come to complete their homework on a regular basis. This venue would be a conducive environment for the students who just need a place to finish their homework. A tutor will also be deployed there in case any of them need help with their work.
<https://www.sinda.org.sg/education/cafeexcel/>

NeuGen Sponsored Tuition
Aims to support the academic performance of students who do not have the financial means for additional help with their studies. This would allow students to get the support they need to pass their examinations, especially PSLE, O-level, and N-level examinations.
<https://www.neugen.org.sg/neu-empowerment-model/>

South Central Community FSC Pass in Primary Six (PIPS)
English, Math, and enrichment programmes to prepare students academically and psychologically, including: PSLE Tuition Bursary Scheme where selected students are enrolled to suitable private tuition centres upon approval by SCC. The programme also includes one-on-one homework coaching with learning mentors.
<https://scfsc.sg/pages/social-lab>

Project Lend a Hand
3-month intensive exam skills preparation for English, Math, and Science.
<https://scfsc.sg/pages/social-lab>

Chinese Development Assistance Council (CDAC) The Supervised Homework Group
The programme provides holistic help to families under CDAC Family Assistance Programme by guiding their upper primary children in their schoolwork and organising activities to develop their character. For those gross monthly household income not exceeding \$2,400 or gross monthly per capita income not exceeding \$800.
<https://www.cdac.org.sg/supporting-families/cdac-family-assistance-programme/supervised-homework-group/>

Project YOUth Can Shine
Guiding their lower secondary school children in their schoolwork and helping to realise their potential through exposure to build on their competencies. For those gross monthly household income not exceeding \$2,400 or gross monthly per capita income not exceeding \$800.
<https://www.cdac.org.sg/supporting-families/cdac-family-assistance-programme/project-youth-can-shine/>

SHINE CYS Reading Odyssey
The Reading Odyssey (RO) is a reading programme for children with low reading ability. The programme serves primary school children who are vulnerable by their social circumstances or unmet need.
<https://www.shine.org.sg/reading-odyssey>

ALPS
Language and literacy intervention programme to Actualize Learning Potential and Promote Skills required for meaningful learning.
<https://www.shine.org.sg/eps>

Bartley Community Care Services BCCS Kids Aglow @ Zhonghua
Building a love for reading in young children from low income/disadvantaged families through stories, arts & crafts, games, exploration and creative projects, and fostering family bonding and quality relationships.
<https://www.bccs.org.sg/kidsaglow>

Bethesda Care Services School based social work
Various programmes and mentoring to help at-risk youths reach their potential. Works with parents and teachers to enhance stability and strengthen their relationships with students.
<https://bethesdaicare.sg/services-family/school-based-social-work>

Hopeful Tinker
Gathers and provides educational resources for children and youths from LIF, including doorstep delivery of physical Tinker boxes containing educational content and free-access digital platform, E-Tinker.
<https://www.wearehopeful.sg/about-us>

Octava Foundation KidsExcel @ Spright
Afterschool enrichment programme for beneficiaries of AMKFSC. Comprises of sports and academic enrichment programmes.
<https://octavafoundation.org/portfolio/>

Tan Chin Tuan Foundation More Than Words
Enrichment workshops for children to learn creatively and communicate effectively. Also extended to charity staff to equip them with creative approaches to engage and connect with children and youth, who may come from vulnerable backgrounds.
<https://tanchintuan.com/signature-programmes/more-than-words/>

Tasek Jurong Gift of Reading +
English enrichment programme to attain proficiency in the English language through plays, storytelling, big books reading aloud and other interactive pupil-centric activities.
<https://tasekjurong.org/gift-of-reading-gor/>

Tasek Tuition
Academic support programme that helps students in English, Math and Science supported by tutors.
<https://tasekjurong.org/tasek-tuition/>

Campus Impact Learning Curve
Provide academic support to students, one lesson per week per subject tutored by trained volunteer tutors on weekday nights.
<https://www.campusimpact.org.sg/our-programmes/>

Yaysan Mendaki Mendaki Tuition Scheme
Provides affordable tuition to help students achieve better results in their school and national exams. Also required for meaningful learning.
https://www.mendaki.org.sg/tuition_packages/mendaki-tuition-scheme-mts/

Pasir Ris Family Service Centre Wonder Kids
Working with Hai Sing Catholic High School to reach out to children from the rental block of Blk 476A whose parents are at work during the day. 8 afternoon sessions are conducted by our program staff and social worker.
<http://prfsc.goodnews.org.sg/services/>

Tuition Programme
Weekly tuition programme with volunteers from Bethesda Pasir Ris Mission Church.
<http://prfsc.goodnews.org.sg/services/>

HOPE Worldwide (Singapore) Tuition Programme
Academic and befriending to serve disadvantaged and at-risk youths, including character development, enrichment activities, skill empowerment initiatives and Movie Therapy® workshops on youth-related topics.
<https://www.hopewwea.org/hope-for-youth/>

DREAMS Academic Support
Working with community partners to provide support in homework, instruction and error correction so that our children are better equipped with academic skills to become more efficient learners.
<https://www.dreamsasia.org/our-programmes>

Metropolitan Young Men's Christian Association Of Singapore M.Y Mentoring
School-based programme that focuses on providing a safe and nurturing space for students to share their experiences, thoughts, and feelings while educating them on mental wellness and character development. This includes experiential learning under the guidance of volunteer youth mentors.
<https://www.mymca.org.sg/programmes?type=M.Y%20Mentoring>

32pages 32pages
A ground-up initiative which aims to build up the emotional resilience of children with reading, literacy and storytelling programmes.
<https://www.32pages.org/>

The Volunteer Switchboard Venture
Venture provides underprivileged youths with experiences, activities and avenues designed to enrich their perspectives while building up their social skills through experience trails. It aims to provide knowledge of various heritage aspects/places of Singapore which they are not usually able to experience.
<https://thevolunteerswitchboard.org/programmes-venture>

Child at Street 11 Student Care
Offers the combination of a focused education programme complemented by quality care for children.
<https://street11.org.sg/>

Curious Thoughts Giving CuriousTime @ SSAs
Let's Teach English!/ StoryTime/ Let's Learn English/ Jolly Phonics Training
They provide free quality literacy classes to children from less privileged backgrounds through various programmes.
<https://giving.curiousthoughts.sg/>

KidStart Kid Start Stories
KidSTART families will be gifted a mini-library comprising a bookshelf and a set of specially selected age-appropriate books sponsored by SP Group and EtonHouse Community Fund. This is to help families create a conducive space within the home to nurture a love for books and reading amongst children.
<https://kidstart.sg/kidstart-stories-mini-libraries-to-help-families-nurture-the-love-of-reading/>

Playeum High Touch Programme
These programmes take place over a span of 2 to 6 months. Working with our social service organisation partners, these tailored programmes (using STEAM with a play- and arts-based approach) are specially for children from at-risk backgrounds - whether due to poverty, single parenthood, low parental education levels, parental incarceration, or living in a community with a high crime rate.
<https://www.playeum.com/high-touch-programmes>

Ministry of Education (MOE) UPLIFT
Support the partnership between schools and community partners to enhance upstream wraparound support for disadvantaged students. Aims to combat long-term absenteeism – a key barrier that impedes students' educational progress.
<https://www.moe.gov.sg/news/press-releases/20211110-expansion-of-uplift-initiatives>

CURRENT INITIATIVES MAP

Details of Initiatives and Organisations

EDUCATION

2. Improving Digital Literacy

DBS Foundation, IMDA
Digital for Life
Supports national Digital for Life movement by enhancing access to digital literacy training, bolstering digital inclusion efforts in Singapore. <https://www.dbs.com/foundation/community-impact/forqing-digital-inclusion-with-digital-for-life-movement>

Make the Change, Media Literacy Council Digital Arts for All (DAFA)
Platform for communities to express themselves through digital arts and increase awareness in becoming responsible digital citizens. Their works are then showcased on the website's gallery and e-commerce platform. <https://www.digitalartsforall.com/about>
+
Project D.I.P – Digital Inclusion
Equipping each Student with a Laptop
Project D.I.P. gets refurbished laptops from corporates and NPOs for students who are not eligible to get a laptop from IMDA's NPP. It aims to complement the efforts of IMDA's NPP to provide laptops for students who fall out of NPP's ambit. <https://www.projectdipsg.com/>
+
Empowering Students with Digital Literacy Skills
Conducts digital literacy workshop that focuses on laptop-operating skills and cyber-hygiene habits for students who receive a laptop through IMDA's NPP programme or the community, whose parents often lack the IT knowledge to support their child at home. <https://www.projectdipsg.com/>
+
Enabling Rental Households to have Internet Access
IMDA's NEU PC Plus and Home Access programme provide Internet access to the lower-income households. It works with IMDA to facilitate the applications of NEU PC Plus for eligible students. <https://www.projectdipsg.com/>
+
Elevating IT Capacities in the Communities
Trains up youths residing in the community to be IT ambassadors and set up Interest Groups in the respective People's Association (PA) grassroots organisations (GRO), to roll-out suitable workshops based on needs and interest-areas identified in each community for public education. <https://www.projectdipsg.com/>

POSB
Smart Buddy
A contactless payment ecosystem/mobile app allows parents to remotely manage their children's spending and savings, while empowering students to monitor their own finances. Students are also able to track their fitness activity such as daily steps and calories burnt using the POSB watch. <https://www.posb.com.sg/personal/deposits/bank-with-ease/posb-smart-buddy.page?pid=sq-posb-variety-deposits-smartbuddy>

Beyond Social Services
Bridge the Digital Divide Fund
Designated fund for facilitating initiatives that promote digital inclusion for individuals, families or communities. <https://www.beyond.org.sg/support-2/>

3. Supporting Early Childhood Learning Needs

KidSTART
KidSTART @ Community
Weekly support playgroup sessions for young children from 1-3 years old. Opportunity for KidSTART parents to bond with their child and the community. Imparts parenting tips and strategies and prepares children for primary school in a community playgroup setting. <https://kidstart.sg/our-programmes/>
+
KidSTART @ Preschool
Resources are provided to support KidSTART families in selected preschools. Helps with preschool enrolment, monitors children's progress in school, imparts parenting tips to children. <https://kidstart.sg/our-programmes/>

Beyond Social Services
Healthy Start Child Development Centre
Full day childcare centre that accepts only children from families in rental housing at affordable prices to ensure that these children gain access to quality preschool that they might otherwise forgo. <https://www.beyond.org.sg/programmes/>

Adventist Community Services
Pay It Forward HeadStart
PIF+ Headstart creates opportunities for kindergarten-age children to become aware of others who are less fortunate than them. Children from the Seventh-day Adventist Kindergarten (SDAK) will be included in the monthly PIF+ visitations <https://www.communityservices.org.sg/payitforward>

PAP Community Foundation
PCF Sparkletots
Offers subsidised childcare and kindergarten. <https://www.pcf.org.sg/sparkletots/services/#dual-service>

Early Childhood Development Agency (ECDA)
Development Support Plus (DS-Plus)
This is a programme that is provided in preschools targeted at 2 years old to 6 years old children requiring low levels of EI support and are attending preschools. DS-Plus aims to support children in the transition into a mainstream classroom. EI professionals from the EI centre will work with the child in his/her preschool for an average of 2 to 4 hours per week, co-teaching the child alongside the preschool teacher. [https://www.ecda.gov.sg/parents/other-services/early-intervention-services/development-support-plus-\(ds-plus\)](https://www.ecda.gov.sg/parents/other-services/early-intervention-services/development-support-plus-(ds-plus))

Knowledge Access
Knowledge Access Programme
Providing infant care, playgroup, pre-nursery, nursery, & kindergarten on a holistic curriculum for those with gross household income of \$4000 and below or per capita income of \$1000 and below. <https://knowledgeaccess.org/programmes/>

Singapore Children's Society
Compulsory Education Casework
Counsels both children and parents on the importance of proper schooling and helps them with difficulties they face. Provides assistance to families who failed to register their child for school or send their child to school for the required six years. <https://www.childrensociety.org.sg/services/family-services>

Rainbow Centre
Rainbow Centre Early Intervention Programme
Rainbow Centre Early Intervention Programme (EIP) serves children aged 6 years and below, who have been diagnosed with mild to severe developmental, intellectual, sensory or physical disabilities, or a combination of disabilities. Applicants should be recommended for EIP by a doctor from the Child Development Unit (CDU) at KKH, NUH, SGH or a private paediatrician. <https://www.rainbowcentre.org.sg/early-intervention-programme/>

Early Childhood Development Agency (ECDA)
Early Intervention Programme for Infants & Children (EIPIC)
This is a programme that provides both therapy and educational intervention services, typically in small groups. The child's progress will be assessed regularly, and the intervention goals and strategies customised to the child's individual requirements. [https://www.ecda.gov.sg/parents/other-services/early-intervention-services/early-intervention-programme-for-infants-and-children-\(eipic\)](https://www.ecda.gov.sg/parents/other-services/early-intervention-services/early-intervention-programme-for-infants-and-children-(eipic))

Care Corner
Neuro-Developmental Movement Programme (K1 to P6)
Subsidised for LIF, this is a movement programme based on the Institute for Neuro Physiological Psychology (INPP) Method, designed to improve the child's learning and functioning by addressing the underlying neuro-developmental delay. <https://www.carecorner.org.sg/services/learning-special-needs-lsi/>

Singapore Children's Society
The Incredible Years
Series of interlocking, evidence-based programmes for parents, children and teachers, supported by over 30 years of research. It is to prevent and treat behavioural problems of young children (0-10 months) and promote their social, emotional, and academic competence. The programmes have been shown to work across cultures and socioeconomic groups. <https://www.morningstar.org.sg/incredible-years/>

Bartley Community Care Services
BCCS Caple (Child And Parent Learning Experience)
The programme aims to equip pre-schoolers from disadvantaged backgrounds for primary school with a curriculum covering phonics and basic numeracy concepts. Parents of children enrolled in the programme are also expected to participate in activities that will equip them with the tools to guide their respective children in their learning journey. <https://www.bccs.org.sg/caple>

Singapore Indian Development Association (SINDA)
SINDA Pre-School Bursary
Subsidised for LIF, the programme provides costs relating to pre-school education. Children must be aged seven years old and below and must already be receiving additional subsidy from Early Childhood Development Agency (ECDA) before applying for the Bursary https://www.sinda.org.sg/financial_assistance/pre-school-bursary/

Mendaki
KelasMateMatika@CC
Targeted at parents with preschool children aged 4 to 6 years old. The workshops and activities conducted throughout the lesson aim to empower parents with Mediation Learning Experience (MLE) skills so that they are more confident to teach their children in learning the basic numeracy concepts. <https://www.mendaki.org.sg/programmes/kelasmatematika@cc/>

Kidstart
Multi-Disciplinary Training (MDT) Programme
Provides support for pregnant mothers and children up to 6 years old, through imparting parenting skills and monitoring child's progress since birth. <https://kidstart.sg/>

Wishing Well
Children's Enrichment Programme
Child development programme to support academic, psychosocial, and daily needs. Also offers programmes to hone their future life skills e.g., interview skills, public speaking, personal grooming. <https://www.wishingwell.org.sg/>
+
Fresh groceries for Every Student's Home (FRESH)
Provides opportunities to attend grocery shopping trips where they get to pick items they need and learn about nutrition and budget management. <https://www.wishingwell.org.sg/>

Cahaya Community Inspire
Engaging children and youths through mentorship sessions, character development programmes and learning journeys, in partnership with other community actors. <https://www.cahayacommunity.sg/empower>

Octava Foundation
School of Concepts' RISE programme
Octava Foundation's funding gives 150 marginalised children monthly the opportunity to level the playing field by equipping them with strong communication and comprehension skills through SoC's early literacy programme. <https://www.octavafoundation.org/portfolio/>

Morning Star
NOVA (Nurturing One's Valuable Attributes)
Learning Intervention Programme
Early intervention programme adopting a preventative approach for Primary 1 and 2 students with Socio-Emotional Learning difficulties. Children are referred to NOVA by their school's Form Teachers after they have been observed struggling with social-emotional issues due to stressful personal or family situations which they find hard to cope with or do not comprehend. <https://www.morningstar.org.sg/nova-learning-intervention/>

Care Corner
Consultation
Subsidised for LIF, the programme provides consultation to parents for their children's learning and behavioural difficulties. By providing a holistic assessment, identifying underlying causal factors and recommending practical remediation actions, parents are equipped with skills and strategies to aid their child's learning and development. <https://www.carecorner.org.sg/services/learning-special-needs-lsi/>
+
Educational Therapy
Subsidised for LIF, the programme provides specialised learning support intervention for children with developmental delays by helping them improve in their basic academic skills and cognitive functioning. <https://www.carecorner.org.sg/services/educational-speech-and-occupational-therapy/>
+
Speech therapy
Subsidised for LIF, the programme focuses on preventing, assessing, diagnosing, and treating speech, language, social communication and cognitive-communication delays in children. <https://www.carecorner.org.sg/services/educational-speech-and-occupational-therapy/>
+
Caregiver Support
Subsidised for LIF. We equip parents to have a deeper appreciation of their children's learning needs including how to support their learning at home and provide counselling services. <https://www.carecorner.org.sg/services/educational-speech-and-occupational-therapy/>

Chinese Development Assistance Council (CDAC)
'Ready for School' Project
Supporting beneficiary families and their school-going children in preparing for the new school year through the disbursement of vouchers for education materials, transport and necessities in every December. <https://www.cdac.org.sg/supporting-families/ready-for-school-project/>

Viriyā Community Services
Back-To-School-Packs
To support the educational needs of children and youths from low-income families. Total of S\$60 worth of vouchers for purchasing of books, stationery and other items related to educational needs. <https://viriyā.org.sg/our-services/financial-assistance-programme/viriyā-childrens-education-fund/>

Cornerstone Community Services
Cornerstone Development Initiatives School Allowance
Financial assistance scheme developed to give every child an opportunity to complete their foundational education despite their family circumstances. It is offered to Primary and Secondary students from low-income families. <https://www.cornerstoneservices.org.sg/financial-aid>

Singapore Children's Society
Signposts
Signposts for building better behaviour is a programme that helps families prevent or manage the difficult behaviour of preschool and primary school-aged children (3 – 12 years), including those with developmental delay or intellectual disability. Signposts helps parents and caregivers to design a personalised programme that suits the unique needs of your children and develop strategies to prevent and manage difficult behaviour. <https://www.morningstar.org.sg/triple-p/>

Dyslexia Association Singapore
Bursaries for their programmes
Financial assistance such as bursaries ranging from 33% to 100% are available. <https://www.das.org.sg/services/about-our-services/all-programme-fees.html>

4. Enhancing Primary School Education

Singapore Indian Development Association (SINDA)
Before and After School Care Subsidy
The Before and After School Care Subsidy (BASC) is available to low-income families with children aged 7 – 14 enrolled in non-profit BASC centres, augmenting the subsidies provided by Ministry of Social and Family Development (MSF) and Student Care Centres. https://www.sinda.org.sg/financial_assistance/basc/
+
SINDA Bursary
Provides education-related financial assistance to low-income and deserving families (primary and secondary school). Also ensures that all families seeking assistance are assessed and eligible families are linked to appropriate SINDA programmes and schemes. https://www.sinda.org.sg/financial_assistance/sinda-bursary/

Yellow Ribbon
Skills training
YRSG strives to equip inmates with industry-relevant skills. Inmates are provided with generic skills and competencies which include workplace literacy, digital literacy and employability skills. <https://www.yellowribbon.gov.sg/partnership-programmes/skills-training>

YMCA
Vocational and Soft Skills Programme (VASSP)
A 6-month programme that helps youth increase in employability and integrate them into the workforce through essential soft skills and vocational training. <https://www.ymca.org.sg/community-services/ymca-project-bridge/vocational-and-soft-skills-programme/>

Singapore After-Care Association
Education Support Programme
Implemented with the intention of supporting clients who wish to pursue education & skills upgrading to achieve their goals post-release from prison. <https://www.saca.org.sg/what-we-do>

Tri-sector Charity Consultants
Singapore Social Impact Guarantee – Enhancing Youth Support Programme
This programme helps to reintegrate youths-at-risk into society through education or employment. The SIG offers impact-minded donors and government funders a money-back guarantee on their funding. YMCA (Service Provider), TL Whang Foundation (Donor), The Lorinet Foundation (Guarantor). <https://trisector.org/our-project/singapore-social-impact-guarantee-enhancing-youth-support-programme/>

Ministry of Manpower
Skillsfuture
A national movement to provide Singaporeans with the opportunities to develop their fullest potential throughout life, regardless of their starting points. <https://www.mom.gov.sg/employment-practices/skills-training-and-development/skillsfuture>

5. Building Life Skills & Increasing Employability

BABES
Skills-based workshop
Empowers teenage girls through skills workshops quarterly, including Cupcake fondant decorating, Financial Literacy, Social Media entrepreneurship and healthy snack making. <https://www.babes.org.sg/we-are-here-for-you-our-services/>

Octava Foundation's Culinary Scholarship in Support of HCSA Academy
Partnership between Octava Foundation and HCSA Academy, to equip 30 vulnerable individuals under 30 years old with the professional skills required to secure stable employment in the F&B industry. <https://octavafoundation.org/portfolio/>

HOPE Worldwide (Singapore)
Character Development
Academic and befriending support to serve disadvantaged and at-risk youths, including character development, enrichment activities, skill empowerment initiatives and Movie Therapy® workshops on youth-related topics. <https://www.hopewsea.org/hope-for-youth/>

DREAMS
Differentiated Programmes (Extra-Curricular)
Complement schools by providing programmes to expose our children further in areas of interest and other areas outside of school. Such programmes can include coding classes, eco-citizenship cultivation lessons, leadership and critical-thinking focused training. <https://www.dreamsasia.org/our-programmes>

Hatch
UI/UX
Immersive 6-month advanced UI/UX course is designed for anyone who wishes to jumpstart their career in the up-and-coming field of UI/UX Design and Product Management. Hatch offers financial assistance to students from low-income households. As of April 2020, we have also extended the scheme to include those whose employment have been affected by the COVID-19 pandemic. We also provide the option of interest free installment plans for students. <https://www.hatchsg.com/immersive>

Conjunct Consulting with NVPC
Conjunct Advisory
Provides pro-bono consulting services to support ground-up initiatives. Conjunct also provides other services for non-profit/ social organisations <https://conjunctconsulting.org/services/>

Octava Foundation
Young Learners Fund
Offers various grants to social purpose organisations, social innovators, and agencies with programs or solutions to develop, pilot and evaluate, or scale intervention designs. <https://octavafoundation.org/young-learners-fund/>

Beyond Social Services
Beyond Champions Fund
Designated fund for facilitating participation in sports, arts and other activity-based experiential learning programmes. <https://www.beyond.org.sg/support-2/>

EDUCATION

6. Providing Youth Mentorship & Career Guidance

Wishing Well
Career GPS/Work attachments/Mentorships
 Exposing students to different career options and encouraging them to work towards their goals. Provides opportunities for internship, counselling services for children and families.
<https://www.wishingwell.org.sg/>

Lakeside FSC
The Grit Hub
 Weekly drop-in for 7- to 12-year-old and 12- to 18-year-old community and home-away-from-home children to grow with mentors at The Grit Project (TGP) Youth and Children Centre.
<https://lakeside.org.sg/our-services/the-grit-project/>

REACH Community Services
Youth Mentoring Programme
 Mentoring for 12-17 years old from lower income families. The positive guidance, support, and role-modelling of a mentor can further unlock the strengths of young people and empower them towards their goals.
<https://reach.org.sg/services/youth-service/casework-and-mentoring/>

Youth Casework and Coaching Programme
 In casework, we work with young people and their families who may be experiencing difficulties to activate their strengths and build resilience. We also provide coaching services to support young people in achieving their goals and maximising their potential.
<https://reach.org.sg/services/youth-service/casework-and-mentoring/>

Hope Collective
Collective Student Academic Peer Mentorship Programme
 The peer mentorship programme pairs up student participants with student volunteers in a "buddy-system" mentorship. The programme focuses on both academic progress (tutoring) and holistic character development (confidence-building and motivation).
<https://wearhopecollective.com/project/peer-mentorship/>

The Astronaut Collective
DAY X
 Flagship career exploration programme for pre-tertiary youths designed as a one-day workshop.
<https://www.hellotac.org/pretertiary-prog>

Beautiful People
The Dream Fund scholarship
 Rooted in a co-funding model, we ensure our mentees take ownership of their future wherein 49% of the mentee's education are borne from the Fund and the remaining 51% by the mentees themselves. Funding part of their secondary, tertiary or university school fees or living expenses.
<https://www.beautifulpeople.org.sg/dream-fund>

Octava Foundation
Short-Term Financial Support (STFS)
 Octava Foundation sponsors Trybe's Short-Term Financial Support, aiming to provide basic financial support to needy youths to pursue career or educational aspirations, while they wait for longer-term financial support to be made available to their family.
<https://octavafoundation.org/portfolio/>

Wishing Well
Reach For the Stars
 Sponsors talented students to pursue formal training and qualifications in the arts, sports, IT, and other areas to aid them in getting into secondary schools of their choice through DSA, or pursuing a future career in the area.
<https://www.wishingwell.org.sg/>

7. Empowering Higher Education

NeuGen
Education Sponsorship
 Aims to remove the financial barrier many students from low-income families encounter when pursuing tertiary education. Full financial support, mentoring, and opportunities to take part in prosocial youth activities are provided. Students may pursue their tertiary education at local and private institutions.
<https://www.neugen.org.sg/neu-empowerment-model/>

Ministry of Education (MOE)
MOE Tuition Grant
 Financial subsidies for students to manage the costs of full-time tertiary education in autonomous universities in Singapore.
<https://www.nus.edu.sg/registrar/administrative-policies-procedures/undergraduate/undergraduate-fees>

The Society of St. Vincent De Paul
Bursaries
 For children to receive tertiary education (ITE/ Polytechnic/ University) are not denied academic advancements by providing them with bursaries to support their higher education pursuits.
<https://ssvpsingapore.org/about/what-we-do/>

Octava Foundation
Octava Foundation Scholarship (SIT)
 Provides \$7,500 per academic year to recipients to be used for educational expenses eg tuition fees, course materials, study trips. Preference is given to financially disadvantaged students to encourage them to reach their fullest potential.
<https://octavafoundation.org/portfolio/>

Octava Foundation Study Award (SMU)
 Provides \$6000 to Singaporean undergraduate recipients to subsidise their annual tuition fees.
<https://octavafoundation.org/portfolio/>

Octava Foundation Study Awards (ITE)
 Awards recipients with \$300 monthly to cover their daily and school-related expenses. Aims to motivate and provide financial support to lower-income families throughout their two years at ITE.
<https://octavafoundation.org/portfolio/>

Octava Foundation Study Award (RP)
 The bursary provides financial assistance to financially needy students in RP, funded by Octava Foundation.
<https://octavafoundation.org/portfolio/>

Octava Foundation Study Award (SUSS)
 Supports 8 SUSS students annually whose per capita income falls below \$1000. Each will receive \$3000 to subsidise their annual tuition fees.
<https://octavafoundation.org/portfolio/>

TP-Octava Foundation Scholarship
 \$3000 will be awarded to recipients towards educational expenses, for Singaporean students from lower-income families in the Diploma course at TP's School of Informatics and IT.
<https://octavafoundation.org/portfolio/>

Yellow Ribbon Singapore
Yellow Ribbon Fund STAR Bursary
 Provide financial assistance to low-income ex-offenders who wish to pursue tertiary education after their release.
<https://www.yellowribbon.gov.sg/yellow-ribbon-fund/programmes/yellow-ribbon-fund-star-bursary>

Lien Centre for Social Innovation (Lien Foundation and SMU)
Handbook On Inequality, Poverty And Unmet Social Needs In Singapore
 This handbook reviews and compiles the existing research and knowledge on poverty and socio-economic inequality in Singapore, with a particular focus on long-term trends and recent debates about social policy.
<https://lcsi.smu.edu.sg/research/handbook-inequality-poverty-unmet-social-needs-singapore>

Tote Board
Tote Board Overseas Scholarships and Non-Profit Leadership Programme
 The scholarship sends successful NPO leaders overseas to deepen their management and entrepreneurial capabilities at renowned universities.
<https://www.toteboard.gov.sg/grants/what-toteboard-cares-about#Strategic%20Focuses>

REACH
Youth Mentoring Programme
 Youth Mentoring Programme offers bursary support, art and sports engagement, drop-in engagement and mentor support.
<https://reach.org.sg/services/youth-service/casework-and-mentoring/>

Beyond Social Services
Education Assistance Fund
 Designated fund for enabling children, youth and adults to further their education and skills.
<https://www.beyond.org.sg/support-2/>

Bethesda Care Services
Mainly I Love Kids (MILK) Scholarship
 The MILK Scholarship is funded by Mainly I Love Kids to provide assistance with tuition fees and education expenses for resilient Polytechnic and University students from disadvantaged families.
<https://bethesdacare.sg/services-family/welfare-services/>

BCS Bursary Awards
 Towards the end of every school year, BCS also awards bursaries to resilient students from low-income families who are studying in Primary and Secondary schools in the eastern part of Singapore as well as ITE College East.
<https://bethesdacare.sg/services-family/welfare-services/>

FaithActs
Bursary Awards
 FaithActs Bursary Awards seeks to assist needy full-time students presently studying. The objectives are to provide financial assistance to students from low-income families to purchase educational materials. Main Sponsor: Faith Methodist Church.
<https://www.faithacts.org.sg/services/community-outreach/bursary-awards>

Honours Night
 Impact and change a life by giving support to youths from needy families. Selection of bursaries and scholarships recipients are assessed by a review committee. Bursaries amounting to a sum of \$100,000 is presented to deserving students annually.
<https://www.faithacts.org.sg/services/community-outreach/honours-night>

NeuGen
Bursary Awards
 Aims to recognise the academic performance of students who have done well in their studies. This would imbue in them a sense of perseverance when faced with stress in school and resilience to bounce back to overcome obstacles.
<https://www.neugen.org.sg/neu-empowerment-model/>

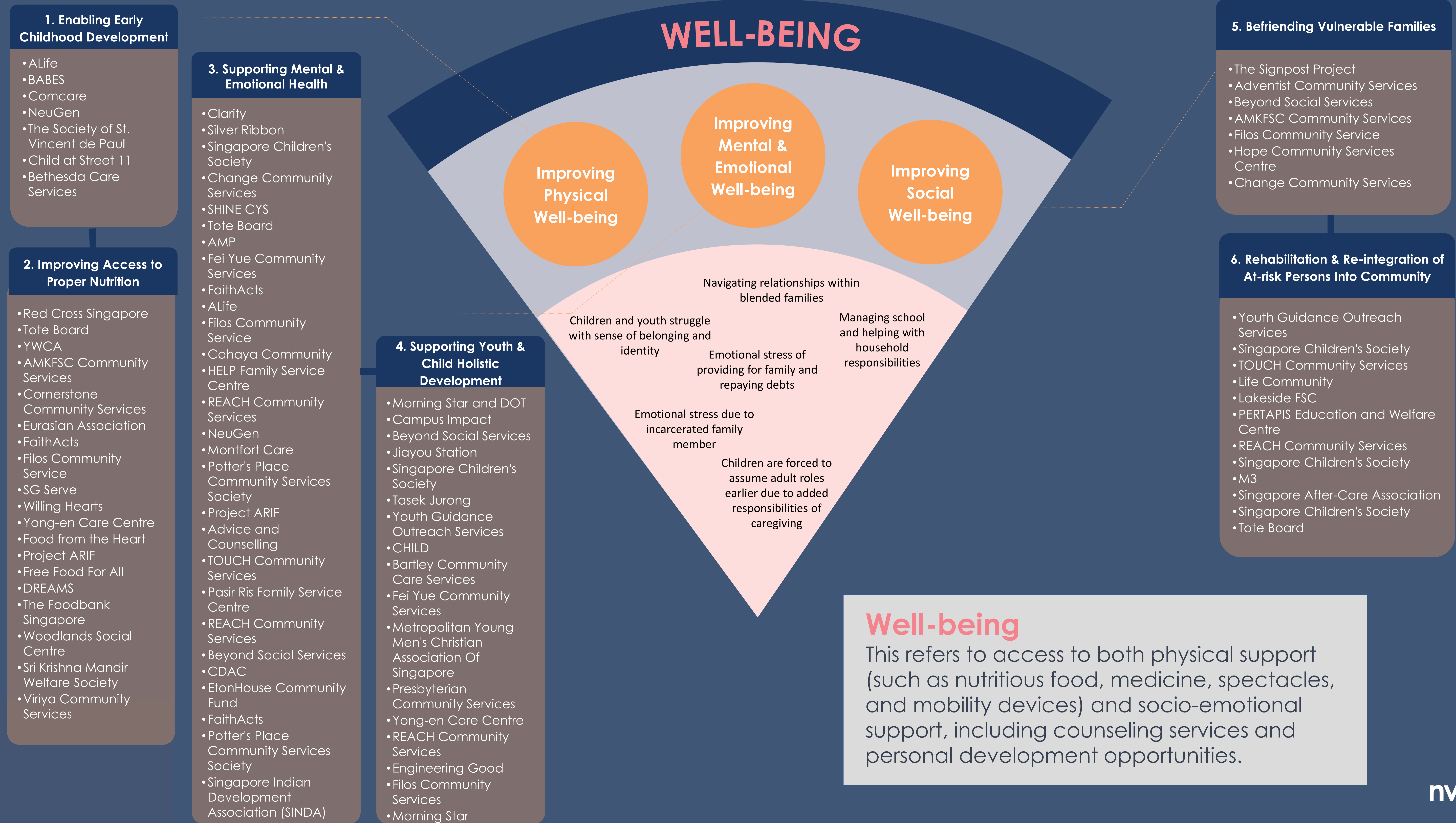
Viriya Community Services
Viriya Education Award
 To acknowledge and reward the effort of children and youths of families who are receiving casework services from Viriya Community Services, those who have achieved good academic improvement despite challenges in academic learning or family financial constraints are rewarded with S\$300 (cheque will be issued payable in the name of the child).
<https://viriya.org.sg/our-services/financial-assistance-programme/viriya-childrens-education-fund/>

Viriya - KPMG Scholarship Fund
 To acknowledge and reward children and youths of families whose families are receiving casework services from Viriya Community Services for their excellent academic achievement in school. S\$600 (cheque will be issued payable in the name of the child).
<https://viriya.org.sg/our-services/financial-assistance-programme/viriya-childrens-education-fund/>

Yayasan Mendaki
amPowered @ ITE
 Empowerment Programme for Boys (EPB) and Empowerment Programme for Girls (EPG) curated for first-year ITE students, to help students acquire life skills, build confidence, and connect students to opportunities to grow their potential.
<https://www.mendaki.org.sg/programmes/ampower-ed-at-ite/>

Tertiary Tuition Fee Subsidy (TTFS)
 Educational subsidy for Malay students, covers their tuition fees at tertiary institutions.
https://www.mendaki.org.sg/assistance_landing/tertiary-tuition-fee-subsidy-ttfs/

CURRENT INITIATIVES MAP



1. Enabling Early Childhood Development

- Alife
- BABES
- Comcare
- NeuGen
- The Society of St. Vincent de Paul
- Child at Street 11
- Bethesda Care Services

2. Improving Access to Proper Nutrition

- Red Cross Singapore
- Tote Board
- YWCA
- AMKFSC Community Services
- Cornerstone Community Services
- Eurasian Association
- FaithActs
- Filos Community Service
- SG Serve
- Willing Hearts
- Yong-en Care Centre
- Food from the Heart
- Project ARIF
- Free Food For All
- DREAMS
- The Foodbank Singapore
- Woodlands Social Centre
- Sri Krishna Mandir Welfare Society
- Viriya Community Services

3. Supporting Mental & Emotional Health

- Clarity
- Silver Ribbon
- Singapore Children's Society
- Change Community Services
- SHINE CYS
- Tote Board
- AMP
- Fei Yue Community Services
- FaithActs
- Alife
- Filos Community Service
- Cahaya Community
- HELP Family Service Centre
- REACH Community Services
- NeuGen
- Montfort Care
- Potter's Place Community Services Society
- Project ARIF
- Advice and Counselling
- TOUCH Community Services
- Pasir Ris Family Service Centre
- REACH Community Services
- Beyond Social Services
- CDAC
- EtonHouse Community Fund
- FaithActs
- Potter's Place Community Services Society
- Singapore Indian Development Association (SINDA)

4. Supporting Youth & Child Holistic Development

- Morning Star and DOT
- Campus Impact
- Beyond Social Services
- Jiayou Station
- Singapore Children's Society
- Tasek Jurong
- Youth Guidance Outreach Services
- CHILD
- Bartley Community Care Services
- Fei Yue Community Services
- Metropolitan Young Men's Christian Association Of Singapore
- Presbyterian Community Services
- Yong-en Care Centre
- REACH Community Services
- Engineering Good
- Filos Community Services
- Morning Star

5. Befriending Vulnerable Families

- The Signpost Project
- Adventist Community Services
- Beyond Social Services
- AMKFSC Community Services
- Filos Community Service
- Hope Community Services Centre
- Change Community Services

6. Rehabilitation & Re-integration of At-risk Persons Into Community

- Youth Guidance Outreach Services
- Singapore Children's Society
- TOUCH Community Services
- Life Community
- Lakeside FSC
- PERTAPIS Education and Welfare Centre
- REACH Community Services
- Singapore Children's Society
- M3
- Singapore After-Care Association
- Singapore Children's Society
- Tote Board

Well-being
 This refers to access to both physical support (such as nutritious food, medicine, spectacles, and mobility devices) and socio-emotional support, including counseling services and personal development opportunities.

WELL-BEING

1. Enabling Early Childhood Development

Alife
ALMA aLife's Mothers' Assistance
 Assisting new mothers who are in financial difficulty to provide the basic necessities to their newborn from birth up until the infant attains the age of two. We ensure that these babies do not miss out on the essential nutrients and foundation needed in their infancy.
<https://www.allife.org.sg/alma>

BABES
Happy Stark
 Aids needy teen moms with baby necessities monthly by delivering them and diapers to their home to help alleviate some financial burden.
<https://www.babes.org.sg/we-are-here-for-you-our-services/>

KidSTART
KidSTART @ Home
 Supports pregnant mothers and children up to 3 years old through home visits. Imparts skills and practical knowledge in early childhood development, health and nutrition for parents. Regularly screens children's growth and maternal well-being to ensure early intervention if needed.
<https://kidstart.sg/our-programmes/>

Comcare
Financial Assistance
 Financial subsidies e.g., for childcare for working mothers.
<https://www.msf.gov.sg/Comcare/Pages/default.aspx>

NeuGen
Milk & Diaper Sponsorship
 Assists low-income families to reduce the financial cost of milk and diapers for infants and children so that their growth and nutritional needs are met.
<https://www.neugen.org.sg/neu-empowerment-model/>

The Society of St. Vincent de Paul
Milk & Diapers Programme
 Provides parents from low-income families with milk and diapers for their very young children (up to three years of age).
<https://svpsingapore.org/about/what-we-do/>

Child at Street 11
Infant & Child Care
 Centre has a need-blind admission policy which does not discriminate against any child based on socio-economic status. Any child can apply for admission to the Centre's programmes in infant care, childcare and After School Care. Open from 7 am to 7 pm on weekdays, the Centre provides a holistic education as well as nutritious meals, shower facilities and time for a midday nap. On Saturdays, the Centre operates from 7 am to 2 pm.
<https://street11.org.sg/>

Bethesda Care Services
SEDCDC Grow Up Milk Powder Scheme
 The SEDCDC Grow Up Milk Powder Scheme helps low-income families with children between 0-3 years old with milk powder.
<https://bethesdaicare.org/services-family/welfare-services/>

2. Improving Access to Proper Nutrition

Red Cross Singapore
TransportAid
 Aids elderly with limited mobility and PWD from lower-income homes to get to and from healthcare service facilities e.g., medical treatment, rehabilitation and day activity centres.
<https://www.redcross.sg/get-assistance/transportaid.html>

Tote Board
YWCA
Food on wheels
 This initiative aims to provide two nutritious meals daily for our struggling children, seniors and disabled members in the community, so they do not go to bed hungry.
<https://ywca.org.sg/food-distribution/meals-on-wheels/>
Sustenance for Families
 Sustenance for Families programme aims to ease some of the financial burdens faced by low-income families who are struggling to make ends meet by providing dry rations.
<https://ywca.org.sg/food-distribution/sustenance-for-families/>

AMKFSC Community Services
Project Pilih Pilih
 Project Pilih Pilih is a fresh food distribution project for low-income families to improve their access to healthy, nutritious food and increase their understanding of healthy eating. The project taps on community stakeholders such as market vendors in the Ang Mo Kio community to donate a wide variety of vegetables, fruits, spices and fresh food. Through partnerships with medical and/or health professionals, families also learn about food nutrition, food awareness and affordable food choices.
AMKFSC Community Services
Project Pilih Pilih
 Project Pilih Pilih is a fresh food distribution project for low-income families to improve their access to healthy, nutritious food and increase their understanding of healthy eating. The project taps on community stakeholders such as market vendors in the Ang Mo Kio community to donate a wide variety of vegetables, fruits, spices and fresh food. Through partnerships with medical and/or health professionals, families also learn about food nutrition, food awareness and affordable food choices.

Cornerstone Community Services
Food Care Programme
 Provides food and daily necessities to households with financial difficulties through our befriending volunteers, who conduct monthly house visit to send groceries and offer socio-emotional support.
<https://www.cornerstoneservices.org.sg/financial-aid>

Eurasian Association
Food Vouchers
 Food Vouchers are delivered to needy households.
<https://www.eurasians.org/families>

FaithActs
SHED (Social and Health Enabling Destination)
 At SHED, Alexandra Hospital Care Managers assist residents aged 40 years and above with basic health and geriatric assessments, care referral and coordination, health coaching for disease prevention, chronic disease monitoring and self-management education.
<https://www.faithacts.org.sg/services/community-outreach/personal-wellness>

Filos Community Service
Food Rations and Essential Items Distribution
 Since the Circuit Breaker in April 2020, Filos has expanded our monthly bread distribution into Waves of Blessing (WOB), to include monthly door-to-door distribution of essential items to the needy at Kembangan-Chai Chee and better help residents with their needs.
<https://www.filos.org.sg/services-assistance>

Blessing Projects
 Every year during festive seasons, groceries and festive goodies are given out to needy families. It is a good opportunity for the community to share the festive joy and blessings with those in need.
<https://www.filos.org.sg/services-assistance>
Adopt a Block
 To donate and distribute rations to 2,804 beneficiaries living in 19 rental blocks in Bedok town.
<https://www.filos.org/community-engagement>

SG Serve
TEN Hot Meals @ Toa Payoh East-Novena
<https://www.sgserve.org/events-1>
Bi-monthly Free Hair Cut @ Hougang, Yio Chu Kang, Bukit Batok
<https://www.sgserve.org/events-5>
Daily Food Distribution @ Block 609 Bedok Reservoir (Hot Meals @ Eunus)
<https://www.sgserve.org/events-6>

Willing Hearts
Soup Kitchen
 Willing Hearts operates a soup kitchen that prepares, cooks, and distributes about 5,000 daily meals to over 40 locations island-wide, 365 days a year. Beneficiaries include the elderly, the disabled, low-income families, children from single-parent families or otherwise poverty-stricken families, and migrant workers in Singapore.
<https://willinghearts.org.sg/>

Yong-en Care Centre
Pantry Plenish, Bread Walk, Fresh Food
 Our monthly food distribution programme provides monthly dried food rations containing staple items, as immediate assistance for low-income families and aged seniors in Chinatown, Jalan Kukoh and York Hill. We also distribute bread and fresh food to lessen their financial burden and have healthier food options.
<https://www.yong-en.org.sg/care-assistance>

Food from the Heart
Bread Run Programme
 To feed the needy with safe-for-consumption bread that would otherwise have been thrown away. In collaboration with partners who donate bread, volunteers who can deliver the bread, and community partners who pass on the bread to our beneficiaries.
<https://www.foodfromtheheart.sg/bread-run/>

Community Food Pack
 Distributions of fresh fruit, eggs and bread, as well as monthly food packs of non-perishable food items. The programme helps the less-fortunate put food on the table and offset their living expenses.
<https://www.foodfromtheheart.sg/community-food-pack/>
School Goodie Bag
 Providing underprivileged primary and secondary school students and their families with food rations to support them through a key stage of their lives.
<https://www.foodfromtheheart.sg/school-goodie-bag/>

Project Belanja
 App-driven hot food redemption programme, run in partnership with hawkers stall owners. The programme provides needy with freshly-cooked meals to be redeemed at designated neighbouring hawkers stalls, within proximity of the activity zones of the beneficiaries.
<https://www.foodfromtheheart.sg/project-belanja/>
Market Place
 Reduces food waste while feeding the needy by channeling food that retailers do not wish to keep on the shelves but still good for consumption food to those who need it.
<https://www.foodfromtheheart.sg/market-place/>

Project ARIF
Lactation Education
 Lactation Education is a free breastfeeding education and counselling service for Project ARIF couples. Conducted by our senior staff nurse, who is an International Board Certified Lactation Consultant (IBCLC), each 20-minute session aims to guide and support couples in breastfeeding related issues. In addition, couples can receive relevant advice on antenatal and postnatal issues.
<https://www.projectarif.sg/resource-centre/lactation-education-support/>
Health Meet
 A free, in-person, health consult session for couples at our Resource Centres, run by our clinicians and case managers, we aim to explore how couples and families can be better supported in terms of their health, mental wellness and any other relevant areas.
<https://www.projectarif.sg/resource-centre/healthmeet/>

Free Food For All
KidsLuvit!
 KidsLuvit! is a monthly breakfast programme for young children living in rental blocks, to increase their readiness for school, making them more alert and attentive in class, with improved attendance and academic performance.
<https://www.freefood.org.sg/initiatives>

EAT GOOD, DO GOOD
 A fuss-free and nutritious option, our Ready-to-Eat meal pouches are available in 3 to 12-month supplies for vulnerable individuals and families. Each meal pouch comes with a shelf life of two years, without any need for refrigeration or cooking.
<https://www.freefood.org.sg/initiatives>
Community Fridge
 A collaboration with Chong Pang CC, our Community Fridge initiative was introduced in 2020 to bring residents of Yishun fresh and chilled groceries, completely free of charge.
<https://www.freefood.org.sg/initiatives>

Ready-to-Cook Chicken Vending Machine
 Offers Yishun residents with ready-to-cook chicken vending machine at their void deck accessible at any time of the day, to encourage families to have healthier home-cooked meals. Provides residents with a pre-paid card to redeem chicken monthly.
<https://www.freefood.org.sg/initiatives>
Hydroponics Farm
 Pilot small-scale hydroponics farm. Built on growing rails that can be adjusted to control the height, the harvested produce is distributed to our beneficiaries to supplement their dietary needs.
<https://www.freefood.org.sg/initiatives>

DREAMS
Nutrition, Health and Wellness
 DREAMS will work with community partners to provide access and guidance for our children to stay healthy and take care of their minds and bodies.
<https://www.dreamsasiasia.org/our-programmes>

The Foodbank Singapore
Food Pantry
 The Food Pantry 2.0 serves as an automated platform to dispense emergency food aid 24/7 to those in need. Through FSCs and other social service agencies, we identify such clients and provide them with Bank Cards loaded with free credits to receive food from the vending machines.
<https://foodbank.sg/our-big-projects/food-pantry/>
Bank Card Programme
 The Bank Card Programme is a smart wallet that is pre-loaded with credits every month. With the bank cards, beneficiaries can receive food from participating F&B outlets and Food Bank's Food Pantry at any time.
<https://foodbank.sg/bank-card-programme/>

Woodlands Social Centre
Food Donations
 WSC partnered with The Boys' Brigade and Evangel Kindergarten to contribute food hampers and breakfast sets to our beneficiaries and other low-income families living in our Woodlands community.
<https://wsc.org.sg/ourservices/#Welfare>
Community Nursing Post
 Partnered with professional nurses from Woodlands Health to provide FREE basic preventive health checks in the community. Services include eyesight, blood sugar, and blood pressure tests. All Singaporeans and PRs residing in Woodlands, Marsiling, Admiralty, Sembawang, Canberra or Yishun are welcome.
<https://wsc.org.sg/ourservices/#Welfare>

Sri Krishna Mandir Welfare Society
STREET CHARITY
 Street outreach to provide nutritious vegetarian food to the poor and the needy on the streets.
<https://www.skmwelfare.org/project-2>

Viriya Community Services
Viriya MediAssist Fund
 Viriya MediAssist Fund is a joint collaboration between VFSC and Potong Pasir Citizen's Consultative Committee (CCC) for those with gross per capita monthly household income of \$690 and below. The fund covers their medical treatment, medical follow-ups, medical equipment and consumables, treatments and other support services such as home help service and home rectification.
<https://viriya.org.sg/our-services/financial-assistance-programme/viriya-mediassist-fund/>
Viriya Children Medical Programme (VCMP)
 Viriya Children Medical Programme (VCMP) helps children who requires long term medical care. Age 16 years old and below (at the point of application). For those with gross monthly family per capita income of \$690 or less. Successful applicants are provided with S\$100 worth of assistance per month and can be further supported by other VCS' programmes and services.
<https://viriya.org.sg/our-services/financial-assistance-programme/viriya-mediassist-fund/>

3. Supporting Mental & Emotional Health

Clarity
 Pro Bono Counselling Services (Maternal wellness) Assessment and counselling services for a range of psychological issues including perinatal anxiety and mood disorders. Assessment and treatment is delivered by pro-bono therapists.
<https://www.clarity-singapore.org/services>

Silver Ribbon
 Free counselling services
 Offers complimentary counselling services to all. Deploys Executives who have a degree in Psychology, Social Work or Counselling, and completed intense in-house training, to provide basic emotional support for each client.
<https://www.silverribboningapore.com/ccs.html>

Singapore Children's Society
Sunbeam Place @ Children's Society
 Residential home and safe place for children who have been abused or neglected in need of protection, or whose parents are unable to provide proper care. Provides casework and counselling for beneficiaries in preparation of reunification with families, educational programmes to develop children's skills and competencies.
<https://www.childrensociety.org.sg/services/vulnerable-children-and-youth>

Tinkle Friend
 National toll-free helpline and chatline for primary school children, manned by trained volunteers and staff. Provides advice and information to lonely and distressed children whose parents or caregivers may not be able to support them.
<https://www.childrensociety.org.sg/services/children-and-youth-services>
Vulnerable Witness Support
 Aims to provide adequate support to vulnerable child victims and witnesses (under 18) who have to testify in criminal cases. Trained volunteer support persons are assigned to each witness to help the child witness deal with stress management and familiarise them with judicial procedures.
<https://www.childrensociety.org.sg/services/children-and-youth-services>

Change Community Services
Counselling
 Our counselling services aim to provide a safe place of support for people who are journeying through challenges in life. These services are available to individuals, couples and families who may be working through issues such as stress, anger management, anxiety, depression, self-harm, relationship and marital issues, and domestic abuse (emotional/ physical).
<https://www.changeccs.org/services/counselling>

SHINE CYS
Resilience
 Resilience is a community-based youth mental health programme meant for youths, aged 12 to 25 years, and their caregivers who are keen to gain insights and improve mental wellbeing.
<https://www.shine.org.sg/resilience>

Tote Board
 Beyond the Label Campaign
 This five-year public education campaign sought to change public perceptions towards persons with mental health conditions by raising awareness, addressing stigma and challenging harmful stereotypes around the issue.
<https://www.toteboard.gov.sg/grants/what-toteboard-cares-about#Strategic%20Focuses>

Inaugural Shared Gifting Circle
 Tote Board set aside S\$2 million to convene a pilot Shared Gifting Circle to improve early identification of mental health conditions in children and youth.
<https://www.toteboard.gov.sg/grants/what-toteboard-cares-about#Strategic%20Focuses>

AMP
 The AMP Helpline
 The AMP Helpline provides emotional support to a person in distress. It offers non-judgmental listening where you have the freedom to speak about anything that is causing an emotional crisis, without the fear of being judged and with the assurance of confidentiality.
<https://www.amp.org.sg/counselling/>

Fei Yue Community Services
CREST (Community Resource Engagement and Support Team)
 Our Community Resource, Engagement and Support (CREST) teams support clients who are at risk of or diagnosed with mental illness as well as their caregivers. The teams provide basic emotional support and monitoring of their mental health conditions through home visits and service linkages.
<https://fycs.org/community-mental-health-department/>
Youth Go - Casework Services
 Youths can seek professional counselling help and support services regarding their personal issues and be assisted by youth workers in dealing and coping with their challenges. The worker may also work holistically and systemically with the youths' school and family to effect change.
<https://fycs.org/youth-go/>

ec2.sg
 A community mental health programme for youths aged between 12 to 25 years old. ec2 aims to promote mental resilience by empowering youths to take charge of their mental health by connecting them to available resources and instilling courage in them to seek help and engage with the community.
<https://fycs.org/ec2-sg/>

FaithActs
Casework & Counselling
 In Casework & Counselling, we, at FaithActs aim to provide a helping hand and come alongside those who are facing emotional, psychological, relationship and marital problems. Provides counselling to youths, families and seniors, financial assistance, information and referral services.
<https://www.faithacts.org.sg/services/community-outreach/casework-counselling>

WELL-BEING

ALife
SUPeRF (Support Unplanned Pregnancies Resource Facilitation)
 Provides resources and counselling for women who are confronted by unplanned and unsupported pregnancies so that they can make informed decisions.
<https://www.alife.org.sg/superf>

Filos Community Service
Filos @ Kembangan-Chai Chee and Kampong Chai Chee
 Filos' mental health services provide holistic and integrated physical and mental health care as well as social support for youth, adult and senior residents with complex issues in the Kembangan-Chai Chee and Kampong Chai Chee community.
<https://www.filos.sg/services-eldercare>

Cahaya Community
Psycho-Social Support
 The community supports parents who face stress and require support to maintain wellness. Through partnerships with experts, the team co-designs and lead activities to raise awareness on different family and community-level coping strategies.
<https://www.cahayacommunity.sg/empower>

HELP Family Service Centre
Counselling
 Counselling is offered as an individual, joint or family sessions to address the different needs. We are committed to offer professional and holistic care and support during and after a divorce.
<https://helpfsc.org.sg/services-programmes/divorce-support-specialist-programmes/>

REACH Community Services
Triple H Groupwork Programme
 The programme hoped to bring healing to wounded Hearts, instill Hope for recovery and to encourage group members to reach out to one another with supportive Hands. During the 'Triple H' run, members journey with others experiencing similar mental health challenges while learning more about discovering coping strategies to better manage their struggles.
<https://reach.org.sg/services/family-service/group-work/>

Counselling – Individuals
 Dealing with: Interpersonal Relationships, Personal Growth, Healing, Grief and Mental Health (E.g. Stress, Anxiety and Depression).
<https://reach.org.sg/services/counselling-service/counselling/>

NeuGen
Counselling
 Qualified professionals providing children a safe and non-judgmental space to talk about their thoughts, feelings, and any issues that may hamper their well-being.
<https://www.neugen.org.sg/neu-empowerment-model/>

Project ARIF
Advice and Counselling
 Medical Social Workers (MSW) render psychosocial support to couples and assist in matters related to relationships and marital issues, pregnancy, post-natal care, mental wellness, child health and child development.
<https://www.projectarif.sg/resource-centre/>

Montfort Care
Marine Parade Family Service Centre,
@27 Family Service Centre
Case Management & Counselling
 Casework and Counselling by social workers aims to help low-income and vulnerable families not only to make constructive changes to their lives when faced with difficulties but also to prepare themselves for any future challenges ahead.
<https://www.montfortcare.org.sg/about-us/our-centres/>

+
Marine Parade Family Service Centre,
@27 Family Service Centre
Groupwork
 We conduct workshops and therapeutic groupwork to help low-income families develop coping skills and knowledge on topics such as nutrition, budgeting and parenting.
<https://www.montfortcare.org.sg/about-us/our-centres/>

Potter's Place Community Services Society
Counselling Services
 Pro-bono counselling services for those who need someone to talk to in their life journey. This is a place where counselees can share about their concerns and explore ways to manage their situation.
<https://www.pottersplace.org.sg/Overall-Services>

TOUCH Community Services
TOUCH Youth Intervention (TYI) – DigitalMINDSET
 DigitalMINDSET is a nine-month programme for youths aged 12-21 who have developed mental health issues from excessive gaming and device use."
<https://www.touch.org.sg/about-touch/our-services/touch-youth-intervention-homepage>

Pasir Ris Family Service Centre
Casework and Counselling
 We offer casework management and counselling for individuals and families with challenges such as financial difficulties, mental health issues, marital and interpersonal conflicts, children and youth issues, parenting concerns, abuse and family violence.
<http://prfsc.goodnews.org.sg/services/>

REACH Community Services
Casework and Counselling
 We assess the needs of individuals and families to gain a deeper understanding of their situation and provide holistic, coordinated care to address those needs. We attend to those in need living in the Bishan, Sinming, Shunfu and Thomson communities.
<https://reach.org.sg/services/family-service/casework/>

CDAC
Family Assistance Programme
 We support low-income families to cope with their basic living and/or education needs of their children and facilitate them to become more resilient and self-reliant with financial assistance, guidance in employment, programmes for children and families.
<https://www.cdac.org.sg/supporting-families/cdac-family-assistance-programme/>

EtonHouse Community Fund
Covid19 Initiative
 Provided resources to needy families.
<https://www.ehcommunityfund.org.sg/covid-19-initiative/>

FaithActs
Legal Clinic
 FaithActs, in partnership with West Legal Clinic, seeks to provide free basic legal advice to individuals on personal matters (except for Sharia law). The 20-minute meeting with a qualified lawyer will cover areas in which the individual is not legally represented.
<https://www.faithacts.org.sg/services/community-outreach/legal-clinic>

Potter's Place Community Services Society
Legal Counselling Services
 On every 2nd Thursday of the month, qualified lawyers will be on hand to render free legal advice to those facing legal issues or who have queries on the law.
<https://www.pottersplace.org.sg/Overall-Services>

Singapore Indian Development Association (SINDA)
Legal Clinic
 Offers free legal services to Indian families in need. Lawyers from accredited law firms offer their services on a pro-bono basis, explain to clients the relevant legal procedures, legal terms and inform them of support systems that they can tap on.
https://www.sinda.org.sg/financial_assistance/legal-clinic/

REACH Community Services
Green Spot
 A weekly enrichment programme for children 7 to 12 years old. In this weekly enrichment programme, children can participate in activities to learn the basics of mindfulness in a fun and child-friendly way.
<https://www.filos.sg/article/green-spot-oct-2022>

4. Supporting Youth & Child Holistic Development

Morning Star and DOT
Care Nights
 Drop-in centres for childminding, evening support programme for children aged 6 to 14 years.
<https://www.morningstar.org.sg/carenights/>

Campus Impact
After School Engagement
 Programmes cater to students who need closer after-school supervision and support.
<https://www.campusimpact.org.sg/our-programmes/>

+
Study Buddy
 Provides children with a safe and conducive place to study under the supervision of a programme executive and volunteer befrienders daily. Helps students with homework and offers monthly modules aimed at instilling values and sense of purpose.
<https://www.campusimpact.org.sg/our-programmes/>

Beyond Social Services
Youth United
 Provide a nurturing environment to fend off delinquency and potentially harmful behaviours by facilitating the community to contribute positively to the lives of youths in disadvantaged neighbourhoods.
<https://www.beyond.org.sg/programmes/>

Jiayou Station
The Void Deck, Peer Mentorship Programme
 Youth peer mentorship programme which provides academic and personal guidance for students. It also offers programmes to guide youths through mentorship and sharing of experiences.
<https://www.jiayoustationsg.com/>

Progress Nest
SEL Programme
 For young adolescents from lower-income households to bond with Mentors and develop relational skills through experiential learning activities. Activities are based on Social-Emotional Learning (SEL) components which are relevant to issues faced by youths.
<https://www.progress.sg/progressnest>

Superhero Me
Arts events, exhibitions and workshops
 Superhero Me's niche is in inclusive arts programmes for children. It organises arts events, exhibitions and workshops for children
<https://www.superherome.sg/>

Institute of Mental Health
CHAT
 One-stop centre for youth mental health and resources, conducts school projects and outreach activities, training workshops.
<https://www.imh.com.sg/CHAT/Pages/default.aspx>

Singapore Children's Society
Children and Youth Drop-in Services
 Children's Society promotes positive development in children and youth, reduce and prevent youth from engaging in risky behaviours at four youth drop-in centres.
<https://www.childrensociety.org.sg/services/children-and-youth-services>

+
Project CABIN
 Secondary school based drop-in service for youths to hang out after school hours to enjoy facilities e.g., internet access, gaming consoles. Youth workers also conduct life skills workshops and training courses and provide emotional support.
<https://www.childrensociety.org.sg/services/children-and-youth-services>

Tasek Jurong
Beacon Of Life Academy (BOLA)
 Provides platform for youths to build leadership and life skills e.g., resilience and care, and develop socio-emotional skills e.g., self-management, relationship building. Plans recreational cohesion activities and training workshops.
<https://tasekjurong.org/bola/>

+
Tasek Wanderers
 Holistic life skills development programme that provides different platforms for engaging children and youth meaningfully through outdoor activities, under the guidance of Mentors to support them.
<https://tasekjurong.org/tasek-wanderers/>

Youth Guidance Outreach Services
Experiential Learning and Mentoring Programme (ELMP)
 Weekly drop-in programme for youths on Friday for arts and sports activities.
<https://www.ygos.sg/youth-drop-in-centres>

CHILD
Publications
 CHILD believes in giving children the best start to life by using advances in science and strong, evidence-based practices to guide public policies and interventions to improve the emotional, cognitive and social outcomes for all children.
<https://thechild.sg/resources-publications/>

Bartley Community Care Services
BCCS Youthzone
 Engages youths from disadvantaged background with programmes and activities to develop their confidence, maturity, leadership and character.
<https://www.bccs.org.sg/youthzone>

Fei Yue Community Services
Project 180 @ Simei
 Conducts ec2 programme, youth programmes to help them build social and emotional competencies, including cyberwellness, decision making, managing stress, love and relationships, time out programme.
<https://fycc.org/project-180-simei/>

Metropolitan Young Men's Christian Association Of Singapore
M.Y PATH
 A program to provide support and guidance for youths in key areas relating to mental wellbeing and life transitions.
<https://www.mymca.org.sg/programmes?type=M.Y%20MindSpace%20-%20M.Y%20PATH>

Presbyterian Community Services
Pasir Ris 01 Student Care Centre
 Student care centre to foster each child's intellectual, physical, emotional and social well-being within a stimulating and safe environment, through supervised study time, moral education and other engaging activities.
<https://pcs.org.sg/services/student-care-services/>

Yong-en Care Centre
Rainbow Support Group
 We provide positive engagement to children from low-income single parent households who have experienced some form of loss in the family. Through hands-on activities and connecting with others, our programmes imbue positive values to help them regulate their emotions and make sense of the changes they are going through in the face of losing a loved one.
<https://www.yong-en.org.sg/families/>

REACH Community Services
REACH Youth Powerhouse Drop-in Centre
 For youths who want someone to talk to about problems or relax after school.
<https://reach.org.sg/services/youth-service/>

Engineering Good
Digital for Social Good (D4SG)
 An initiative by Engineering Good to collect, refurbish and provide desktops to local charities and non-profit organizations for their operational needs. The refurbished desktops distributed to the SSAs are used for purposes such as Home-Based learning, adults looking for employment, computer lessons and office usage.
<https://engineeringgood.org/digital-inclusion/d4sg/>

Filos Community Services
Green Spot
 A weekly enrichment programme for children 7 to 12 years old. In this weekly enrichment programme, children can participate in activities to learn the basics of mindfulness in a fun and child-friendly way.
<https://www.filos.sg/article/green-spot-oct-2022>

Morning Star
Triple P (Positive Parenting Programme)
 Evidence-based parenting and family support programme designed to prevent behavioural, emotional and developmental problems in children by enhancing the knowledge, skills and confidence of parents. Fully subsidised for all parents of children/ teens studying in the supported schools.
<https://www.morningstar.org.sg/triple-p/>

5. Befriending Vulnerable Families

The Signpost Project
The Signpost Project
 Befriends tissue peddlers in SG and provides them with the support they may need, connect with partners and resources.
<https://www.facebook.com/thesignpostproject/>

Adventist Community Services
Pay It Forward Plus
 Wellness Ambassadors (volunteers from Adventist Community Services and the public) offer monthly systematic holistic assistance to lower-income residents. They conduct basic health checks for family members and offer emotional support/ befriending services.
<https://www.communityservices.org.sg/payitforward>

Beyond Social Services
The Community Theatre
 Staging for social change by rallying neighbours to act on their shared challenges.
<https://www.beyond.org.sg/support-2/>

AMKFSC Community Services
Project Stories
 Enhance support for vulnerable persons - children, elderly and persons with disabilities, through sighting and regular engagement.
<https://www.amkfsc.org.sg/what-we-do/family-services/family-service-centres/ang-ma-kio-fsc>

Filos Community Service
Projects with Schools and Corporate Partners
 Working with individual and group volunteers to co-organise, plan and initiate projects to better serve and bring cheer to our beneficiaries. Some of our current school and corporate partners include Singapore Institute of Technology, Temasek Polytechnic, Cognizant and DBS Bank.
<https://www.filos.sg/community-engagement>

Hope Community Services Centre
Hope on Wheels
 Bringing Tangible Help to Needy Families that are Less Mobile through home visits by volunteers to bring basic grocery items and monitor blood pressure. Events such as farm visits, festive celebrations or "makan" sessions among the needy residents are being organised for them in their neighbourhood.
<http://www.hopecc.org/programs.html>

Change Community Services
Night Outreach Programme
 Currently, we conduct outreaches to befriend those rough sleeping, provide daily necessities and connect them with available resources in Singapore.
<https://www.changeesg.sg/services/rough-sleepers>

WELL-BEING

6. Rehabilitation & Re-integration of At-risk Persons Into Community

Youth Guidance Outreach Services

Enhanced STEP-UP Programme (ESU)

A 12-month programme for students at-risk of dropping out of school, as well as out-of-school youths.

<https://www.ygos.sg/diversionary-programmes>

+

Streetwise Programme (SWP) /Enhanced Streetwise Programmes (ESWP)

A 6-month preventive and rehabilitative programme for youths who associate with gangs or have played a minor role in gang-related offences.

<https://www.ygos.sg/diversionary-programmes>

Singapore Children's Society

Appropriate Adult Scheme for Young Suspects

Trains staff members and volunteers, matches them to support young suspects (under 16) who need to attend law enforcement interviews.

<https://www.childrensociety.org.sg/services/children-and-youth-services>

+

Integrated Service Provider

Integrated Service Provider to centralise service provision to young offenders and at-risk youth, for residents in Bishan, Toa Payoh, Novena, Rochor/Kallang, Central and Bukit Merah areas.

<https://www.childrensociety.org.sg/services/children-and-youth-services>

+

Children's Medical Fund

Provides subsidies for treatments and rehabilitative care for chronically ill children, through partnerships with medical social workers of restructured hospitals and agencies.

<https://www.childrensociety.org.sg/services/family-services>

+

Casework and Counselling

Casework and counselling at service centres e.g., Yishun Family Service @ Children's Society, when individuals or families are in crisis or under distress, by trained social service practitioners.

<https://www.childrensociety.org.sg/services/family-services>

Life Community

Friends of Children and Youth (FOCY)

This programme helps children and youths, ages 6 to 16, with at least one parent presently or formerly incarcerated. FOCY intervenes in our beneficiaries' social, physical, emotional, educational development, as well as provide financial assistance. We do it through casework management, regular mentoring sessions, tuition programme, food rations, character-building and life-skills workshops and activities.

<https://life-community.org/programmes/focy/>

Lakeside FSC

Safe Place For Unsupported Pregnancies

They provide case management and counselling through authentic relationships with clients by imparting critical life skills and providing temporary accommodation, as well as referrals to other support partners.

<https://safeplace.org.sg/about-us/>

PERTAPIS Education and Welfare Centre

PERTAPIS Welfare Trust Fund

To provide welfare assistance to the poor, needy and the lower-income community. The Fund provides monthly food rations and essential support to 500 needy families. Welfare programmes also include empowerment education for families and tuition for school-going children.

<https://www.pertapis.org.sg/support-programs>

REACH Community Services

Community Rehabilitation Centre (CRC)

Provides structured rehabilitation activities to the clients in a residential setting. Our objective is to strengthen their family bonds and help them reintegrate into society upon successful completion of the rehabilitation activities.

<https://reach.org.sg/services/youth-service/additional-services/>

Singapore Children's Society

Project LADDER

In collaboration with Singapore Prison Service, it reaches out to families who may be struggling in isolation due to stigma associated with incarceration of their family members. It also facilitates tele-visits for children of inmates to maintain frequent contact.

<https://www.childrensociety.org.sg/services/family-services>

M3

FITRAH (Family and Inmates Throughcare Assistance Haven)

Connects families of inmates to network of assistance while spouses who are in prison are supported with in-care emotional support services.

<https://www.m3.gov.sg/focus-areas/vulnerable-individuals-and-families/>

Singapore After-Care Association Befriending programme

One-to-one befriending for previously incarcerated individuals with a volunteer who will journey with them during the aftercare phase of reintegration.

This includes discussing release plans, identifying main problem areas to work upon his/her release and providing support to address any issues affecting rehabilitation.

<https://www.saca.org.sg/what-we-do>

Singapore Children's Society

Project Relate

Prison referred parenting and visit coaching programmes for inmates, their children and caregivers. This aims to develop empathy and positive communication skills among family members.

<https://www.childrensociety.org.sg/services/family-services>

Tote Board

Tote Board Social Service Fund (TBSSF)

The Tote Board Social Service Fund provides grants for critical and strategic social service programmes and new programmes for the social service sector. Priority includes support for families to break out of cycle of intergenerational social disadvantage.

<https://www.ncss.gov.sg/grants-search/detail-page/ToteBoardSocialServiceFundTBSSF>

CURRENT INITIATIVES MAP

1. Improving Social Currency

- BABES
- Singapore After-Care Association
- AGAPE
- REACH
- Alife
- Bethesda Care Services
- Metropolitan Young Men's Christian Association Of Singapore (MYMCA)
- RiverLife Community Services
- Care Corner
- Red Cross Singapore
- The Astronaut Collective
- YMCA
- 6th Sense
- Fei Yue Community Services
- Care Corner
- SgEnable, IPS and CaringSG
- Cornerstone Community Services
- EN Community Services Society
- Pasir Ris Family Service Centre
- Care Corner
- Kampung Siglap
- TOUCH Community Services
- Beautiful People
- NeuGen
- Life Community
- Mentoring SG
- Advisory

2. Nurturing Community Networks

- Friendzone
- National Heritage Board
- Singapore Anglican Community Services
- Care Corner
- The Volunteer Switchboard
- Beyond Social Services
- HCSA Dayspring Spin
- NeuGen
- Beautiful People

SOCIAL PARTICIPATION

Building Personal & Community Networks

Empowering At-Risk Individuals

Activating Volunteerism & Civic Participation

Existing social bias and stigma around lower-income families

Social networks are typically formed around communities with similar backgrounds.

Negative peer influence

3. Empowering At-Risk Individuals

- National Council of Social Service
- Break the Cycle
- 3Pumpkins
- Project Hills
- SHINE Children and Youth Services
- Singapore After-Care Association
- Society of Starfish Singapore (SSS)
- Fei Yue Community Services
- Yong-en Care Centre
- REACH Community Services
- TOUCH Community Services

4. Activating Volunteerism & Civic Participation

- Ministry of Social and Family Development (MSF), ComLink
- Tan Chin Tuan Foundation
- People's Association
- Beyond Social Services
- Sembawang Family Service Centre
- Kampung Siglap
- Community Foundation of Singapore
- SHINE Children and Youth Services
- HELP Family Service Centre
- New Life Stories

Social Participation

This entails formal and informal support networks, diverse and well-connected neighborhoods, and peer-to-peer learning in schools/workplaces.

SOCIAL PARTICIPATION

1. Improving Social Currency

BABES
Outreach and Youth Engagement
 Partners educational institutions, youth agencies and other community agencies to reach out to young people. It uses creative tools such as forum theatre, focus group discussions and social media to engage youths in the discourse around teenage pregnancy.
<https://www.babes.org.sg/we-are-here-for-you/our-services/>

Singapore After-Care Association
Education and Upskilling
 Education and upskilling support, including casework management and counselling. Provides course fee subsidies, allowance schemes, tuition support, Career Guidance & Mentorship, workshops and programmes.
<https://www.saca.org.sg/education-upskilling>

AGAPE
ATP (Agape Transformation Programme)
 Provides training, job placement with a minimum wage of 2K, which is retention bound through membership. This helps to connect vulnerable communities (ex offenders, single mothers, LIF) to upskilling, employment, mentoring.
<https://new.agape-cp.com/human-resource-solutions/>

REACH
Youth Development Programmes
 To develop well-rounded individuals, we engage youths through weekly/bi-weekly interest-based Arts and Sports activities. We also provide other resources and practical support to help the youth build skills required to engage and sustain employment.
<https://reach.org.sg/Services/youth-service/youth-development-programmes/>

ALife
BUDS
 Best Buddy Support System
 For children & youth from low income or dysfunctional families who struggle socially can benefit from light educational assistance and mentorship.
<https://www.alife.org.sg/buds>

Bethesda Care Services
Youthspace @ BCS
 Street outreach and collaboration with neighbouring schools and other social service organisations to provide a safe space for youths. Weekly academic support and interest groups to learn new skills.
<https://bethesdacare.sg/services-family/youthspacebcs>

Metropolitan Young Men's Christian Association Of Singapore
M.Y Accelerator
 Brings youths through a series of bootcamps to learn from industry experts, develop leadership skills and grow their entrepreneurship acumen. This serves as a catalyst of youth voices and visions in providing resources and mentorship to materialize community-driven ideas.
<https://www.mymca.org.sg/programmes?type=M.Y%20Accelerator>

RiverLife Community Services
Ignite Youth
 IGNITE targets youth aged 11 to 17 years. It seeks to provide academic support for youths from underprivileged families through tutoring. There is also an outdoor youth mentoring programme concurrently to provide holistic development for youths.
<http://www.rcs.org.sg/programmes/>

Care Corner
Managing School Absenteeism (Enhanced Step-up - ESU) - Resources and Opportunities
 For adolescents who are interested in exploring vocational training and/or employment opportunities, we help link them with relevant resources and agencies. These opportunities can enable them to thrive and find a renewed sense of purpose.
<https://www.carecorner.org.sg/services/youth-managing-school-absenteeism/>

+
Managing School Absenteeism (Enhanced Step-up - ESU) - Reconnect
 Integrating back to schools after a long hiatus can be daunting. To facilitate a smoother transition for the adolescent, we work with key school personnel to explore options on helping them reconnect with the school and peers.
<https://www.carecorner.org.sg/services/youth-managing-school-absenteeism/>

+
Managing School Absenteeism (Enhanced Step-up - ESU) - Relationship building
 Builds a relationship with adolescents and gains a better understanding of their needs, we explore what is significant to them and how they may have been impacted by past unpleasant experiences. This allows us to better journey with the adolescents, make informed decisions on plans ahead and explore alternative options if desired.
<https://www.carecorner.org.sg/services/youth-managing-school-absenteeism/>

Red Cross
Young Hearts Programme
 Young Hearts Programme - A series of initiatives to give young children and adolescents from ages 4 - 12 in challenging circumstances a leg-up in life. Includes Stories For All, a reading programme, one-on-one Tuition, Mentorship opportunities, Holiday Enrichment programmes.
<https://www.redcross.sg/our-services/community-services/family-lifeaid.html>

The Astronaut Collective
MISSION X
 Mentoring programme for pre-tertiary youths to help build meaningful relationships with relatable role models who can support them to explore and discover meaningful careers.
<https://www.hellotac.org/pretertiary-prog>

+
APPRENTICESHIPS
 Apprenticeships as a structured hands-on career mentoring programme for youths. Each Apprenticeship serves as a deep-dive into the mentor's profession and through that experience provide relatable context and meaningful mentoring opportunities.
<https://www.hellotac.org/tertiary-prog>

YMCA
M.Y Mentoring
 M.Y Mentoring is a tailor-made school-based programme that focuses on providing a safe and nurturing space for students to share their experiences, thoughts, and feelings while educating them on mental wellness and character development.
<https://www.mymca.org.sg/programmes?type=M.Y%20Mentoring>

6th Sense
Saturday Recreation
 Recreation activities spanning different topics, arts etc. for the children living at the Public Rental Scheme blocks of Kebun Baru.
<https://www.facebook.com/6thSenseSG/>

Fei Yue Community Services
Youth Go - Programmes
 Programmes such as fishing, sports, baking, digital media, and animal-assisted activities are organized by youth workers in order to engage and build rapport with the youths, model positive behaviours, and impart life skills.
<https://fyccs.org/youth-go/>

Care Corner
After-School Engagement (ASE)
 We provide a designated safe space within the school environment for adolescents to play, learn and share. 2-hour sessions with one-to-one check-ins, group learning and continual needs assessment, 2-3 sessions a week over a year
<https://www.carecorner.org.sg/services/youth-positive-engagement-in-school/>

SgEnable, IPS, CaringSG
Community Circles
 Members of the circle meet every few weeks with a volunteer facilitator to keep things on track and make sure that conversations turn into actions.
https://lkyspp.nus.edu.sg/docs/default-source/ips/st_new-community-initiative-to-support-caregivers-of-persons-with-disabilities-to-be-piloted-in-2022_201021.pdf

Cornerstone Community Services
Youth Mentoring
 This is a 6-month mentorship programme* for students aged 10 to 18 years old. Mentors are matched with the students to provide social and emotional support as the latter journey through their schooling years.
<https://www.cornerstoneservices.org.sg/family-support>

EN Community Services Society
Mentoring Programme
 Mentoring programme for disadvantaged youth.
<https://www.ecss.org.sg/our-services/youth>

Pasir Ris Family Service Centre
Group Work
 We conduct psycho-education, experiential or support groupwork to empower and facilitate the growth and development of our participants.
<http://prfsc.goodnews.org.sg/services/>

Kampung Siglap
Retreats & Life Skills Training
 For Families, Children & Youth and Individuals
 Served by Social Service Agencies
 Co-creating with families & individuals to develop resilience and improve mental well-being through life skills workshops, sports & games, art & craft, baking & cooking activities etc.
<https://www.kampungsiglap.com/>

TOUCH Community Services
TOUCH Young Arrows
 On Saturdays, activities for over 500 children from low-income families are conducted at 25 clubs including Ang Mo Kio, Bedok, Bukit Merah, Clementi, Geylang Bahru, Hougang, Marine Parade, Mountbatten, Queenstown, Serangoon, Tampines, Woodlands and Yishun. The line-up of activities include tuition, mentoring, art and craft lessons, indoor and outdoor games, outings, camps, and adventure sports programmes.
<https://www.touch.org.sg/about-touch/our-services/touch-young-arrows-homepage>

Beautiful People
YOUNG LEADERS
 Upon graduating from My Beautiful Life, mentees can apply to become a Young Leader. Our Young Leaders are entrusted with responsibilities such as co-designing and facilitating the mentoring programmes for their juniors, learning new skills and organising large-scale Beautiful People events.
<https://www.beautifulpeople.org.sg/young-leaders>

+
MY BEAUTIFUL LIFE
 flagship programme for girls in residential homes which span over the course of a year. Through My Beautiful Life, we aim to equip our mentees with skills and relationships to help them navigate through life.
<https://www.beautifulpeople.org.sg/my-beautiful-life>

+
Heroes' Journey
 Heroes' Journey is the brother programme to My Beautiful Life. We celebrate the ordinary everyday heroes who are the mentors and mentees, growing together in an extraordinary journey of challenging their own limits.
<https://www.beautifulpeople.org.sg/heroes-journey>

+
Little Giant Steps
 A mentoring programme for young children aged 7 to 12 years. Mentors provide social and emotional support to their young mentees who have experienced trauma in their lives.
<https://www.beautifulpeople.org.sg/little-giant-steps>

+
FREE FOR GOOD
 A mentoring programme for women from Changi Women's Prison. The mentoring process begins in the prison for 6 months before the women are released. The mentoring journey continues after their discharge where mentors assist their mentees live a stable, productive and dignified life.
<https://www.beautifulpeople.org.sg/free-for-good>

+
FAMILIES FOR FAMILIES
 A community of support for mentors and mentees in various aspects of their parenting journey for mothers.
<https://www.beautifulpeople.org.sg/families-for-families>

NeuGen
Mentoring
 Allows suitable volunteers to become role models who inspire, engage, and encourage adolescents to improve their self-esteem and confidence. Mentors and mentees may be paired on similar interests or industries.
<https://www.neugen.org.sg/neu-empowerment-model/>

Life Community
Friends of Children and Youth (FOCY)
 This programme helps children and youths, ages 6 to 16, with at least one parent presently or formerly incarcerated. FOCY intervenes in our beneficiaries' social, physical, emotional, educational development, as well as provide financial assistance. We do it through casework management, regular mentoring sessions, tuition programme, food rations, character-building and life-skills workshops and activities.
<https://life-community.org/programmes/focy/>

Mentoring SG
Mentoring SG
 Mentoring SG is a national movement that aims to build a culture of mentoring in Singapore and make mentoring more accessible for youth.
<https://mentoring.sg/>

Advisory
The Advisory Professionals Network
 A community of young professionals who believe in Advisory's mission of empowering students to make informed career choices, and volunteer their time on a monthly basis as coaches, interviewees, mentors, and speaker
<https://advisory.sg/professionals-network/>

1. Nurturing Community Networks

Friendzone
Friendzone Conversations
 Ground up initiative in connecting with the community/ neighbourhood. Designs and hosts neighbourhood gatherings on and offline to combat social isolation and disconnection and foster meaningful conversations and friendships amongst young adults in Singapore.
<https://friendzone.sg/about>

National Heritage Board
Heritage Cares
 HeritageCares reaches out to the lesser-served communities through a range of heritage programmes at our national museums, heritage institutions and heritage sites. To encourage family bonding and interaction through heritage.
<https://www.nhb.gov.sg/what-we-do/our-work/community-engagement/public-programmes/heritagecares>

Singapore Anglican Community Services
Befrienders Alumni
 A weekly 4-5 hour programme, where we continue to build support, relationships and strengthen rapport with those who have graduated from primary school.
<https://citycomm.org.sg/services/befrienders-alumni-bfa/>

Care Corner
GEAR UP engagement programme
 Through our GEAR-UP programme, we work closely with educators to promote increased engagement between adults and adolescents. We emphasise on providing positive experiences to guide adolescents towards a greater sense of connectedness to the school. 2-hour sessions with experiential group learning activities focused on self-discovery.
<https://www.carecorner.org.sg/services/youth-positive-engagement-in-school/>

The Volunteer Switchboard
Home Sweet Home
 Provide a platform for greater resident-volunteer collaboration to create a positive long term & sustainable impact to the community, makes use of distribution of welfare packs to increase interaction between lower-income residents and volunteer residents.
<https://thevolunteerswitchboard.org/programmes-phsh>

Beyond Social Services
Family Circles
 Bringing community members together for conversations and support.
<https://www.beyond.org.sg/sharifrah-on-family-circles/>

HCSA Dayspring Spin
(Single Parents INformed, INvolved, INcluded)
 Supports single-parents and lone caregivers with access to resources, through a network of volunteers and an interactive website to empower them to make informed decisions and strengthen their social support network.
<https://hcsa.org.sg/programmes/dayspring-spin/>

NeuGen
Youth Engagement Platform (YEP)
 Provides an avenue for adolescents aged 15 to 21 years old to engage in pro-social activities with other positive influences. It also acts as a positive peer support system that adolescents feel safe and heard.
<https://www.neugen.org.sg/neu-empowerment-model/>

+
Mothers'/Caregivers' Support Group
 Provides a safe space for those who have gone through similar experiences to form bonds with and to offer peer support to one another resulting in a strong community. Topics covered include coping with incarceration or an incarcerated spouse, parenting, and coping strategies.
<https://www.neugen.org.sg/neu-empowerment-model/>

Beautiful People
THE BEAUTIFUL PEOPLE FAMILY
 a community-based platform for mentors and mentees to connect.
<https://www.beautifulpeople.org.sg/the-beautiful-people-family>

SOCIAL PARTICIPATION

3. Empowering At-Risk Individuals

**National Council of Social Service
Peer Support Specialist**
Empowers those struggling with mental health conditions in employment, through partnership with individuals with lived experience.
<https://www.ncss.gov.sg/our-initiatives/peer-support-specialist-programme>

Break the Cycle
A ground-up initiative by cyclists to use cycling to break the cycle of recidivism in Singapore.
<https://www.groundupcentral.sg/post/groundup-features-break-the-cycle-sg>

**3Pumpkins
Tak Takut Kids Club**
A community space for children, embedded in rental flat estate (Boon Lay Drive) with a half-shop space, a subtenant of a laundromat. The centre has thus far connected with 200 children (aged 7-14) and their families, and journeyed with 50 at-risk children in close case support.
<https://www.3pumpkins.co/tak-takut-kids-club>

Project Hills
Project Hills is a ground-up initiative that offers various forms of support to families living in public rental housing estates around Singapore, such as: Mei Ling Street, Stirling Road and Kim Tian Place.
<https://www.theprojecthills.com/>

**SHINE Children and Youth Services
Youth Enhanced Supervision (YES);
Theft Intervention Programme (TIP);
Triage**
Specialised treatment group programme for adolescents who have repeatedly committed theft offences.
<https://www.shine.org.sg/targetintervention>
+
Guidance Programme (GP)
6-month pre-court diversionary programme for youth offenders who have committed minor offences. Those who successfully complete the programme are given a warning in lieu of court prosecution.
<https://www.shine.org.sg/targetintervention>

+
Enhanced STEP-UP (ESU)
Support programme for students at risk of dropping out of school and youth who are out of school.
<https://www.shine.org.sg/targetintervention>

**Singapore After-Care Association
Case Management**
Case Management is a collaborative process for ex-offenders looking to reintegrate into society. A professional case worker assesses the needs of the client (and family), and where appropriate, arranges, coordinates, monitors, evaluates, and advocates for a range of services, from counselling support to information and referral services, to meet the identified needs of the client.
<https://www.saca.org.sg/case-management>

**Society of Starfish Singapore (SSS)
Project Starfish**
Supporting youths who are out of school due to financial, criminal, mental health or familial reasons with tuition and educational guidance.
<https://societyofstarfishsingapore.com/>

**Fei Yue Community Services
Project 180 @ Bukit Batok**
180 @ Bukit Batok (A Youth Service by Fei Yue Community Services) is an Integrated Service Provider (ISP) appointed by MSF to run a suite of MSF-funded programmes for at-risk youths and young offenders below 21 years of age, serving the boundary of Bukit Batok, Bukit Panjang and Choa Chu Kang.
<https://fyys.org/project-180-bukit-batok/>

+
Youth Go - Street Outreach
Youth workers make contact with youths in the neighbourhoods by going onto the streets to get to know and befriend them. Youths are informed of the services that exist in their locality, and social workers identify any needs or risk behaviours for appropriate intervention.
<https://fyys.org/youth-go/>

+
Youth Go - Information and Referral
Youths who are in distress, facing issues, or need assistance in any way can obtain the services or resources they require.
<https://fyys.org/youth-go/>

+
Youth Go - Hotspot referral
Our social workers and youth workers outreach to youths, aged 12 to 21, on the streets in these areas and engage them for further intervention work through activities, groupwork and casework.
<https://fyys.org/youth-go/>

**Yong-en Care Centre
Women of Strength**
Started off as Single Mothers Support Group, it is now called Women of Strength where we foster a caring, open community for all mothers from low-income families. Our group is a safe space they can turn to for socio-emotional and financial support when they feel overwhelmed with caring for themselves and their children. The support this group provides will strengthen them and build their resilience to continue to care for themselves and their families.
<https://www.yong-en.org.sg/families/>

**REACH Community Services
Post-Care Support for youths at the Singapore Boys' Home (SBH)**
Youth rehabilitation programme to reinforce and sustain the work done (e.g. skills learnt, habits formed) during their in-care residential period. Serves as a bridge linking them to community agencies that were introduced when they were at the SBH. This ensures that they remain crime-free and do not re-enter the criminal justice or care and protection system in the future.
<https://reach.org.sg/services/youth-service/additional-services/>

+
Prison Youth Outreach Programme
A volunteer programme born out of the need to increase and strengthen the support given to incarcerated youths in Singapore. Many of these youths come from complicated family backgrounds and are mostly deprived of positive social support and guidance.
<https://reach.org.sg/services/youth-service/additional-services/>

**TOUCH Community Services
TOUCH Youth Intervention (TYI) – SPARKX**
The programme aims to increase protective factors that prevents children from engaging in delinquency behaviours in adolescence.
<https://www.touch.org.sg/about-touch-our-services/touch-youth-intervention-homepage>

4. Activating Volunteerism & Civic Participation

**Ministry of Social and Family Development (MSF)
ComLink**
ComLink volunteers provide Comprehensive, Convenient and Coordinated (3C) support to empower families with children living in rental housing to improve their circumstances and build up resources for a brighter future.
<https://www.msf.gov.sg/Volunteer/Pages/msf-volunteer-programmes/comlink.aspx>

**Tan Chin Tuan Foundation
Project Cheer**
Project Cheer microsite as an online resource for youths to run their own community initiatives. Sessions in partnership with ACJC also aim to encourage multigenerational bonding through interactive activities.
<https://tanchintuan.com/signature-programmes/project-cheer/>

+
Project WISH
Companionship to elderly, fulfilling wishes requested
<https://tanchintuan.com/signature-programmes/project-wish/>

**People's Association
We Care Fund**
Project We Care CEOs and Business Leaders Network is a corporate social responsibility (CSR) initiative led by the private sector and the People's Association (PA) to encourage corporate giving and volunteerism in Singapore; engaging CEOs and business leaders to rally their employees to contribute towards meaningful causes in the community.
<https://www.pa.gov.sg/our-network/partners/project-we-care>

**Beyond Social Services
Competent Communities**
A deepening of the community building approach within residents in the neighbourhood with an emphasis on local response.
<https://www.beyond.org.sg/support-2/>

**Sembawang Family Service Centre
Asset Based Community Development (ABCD)
Project**
A community project to rally disadvantaged residents within the Sembawang community to come together, plan events and drive initiatives that will benefit their own community.
<https://www.stfc.org.sg/family-service-centre>

**Kampung Siglap
First Things First**
Experiential half day learning activity for large group participants to experience simulated poverty through a range of different personas.
<https://www.kampungsiglap.com/fff>

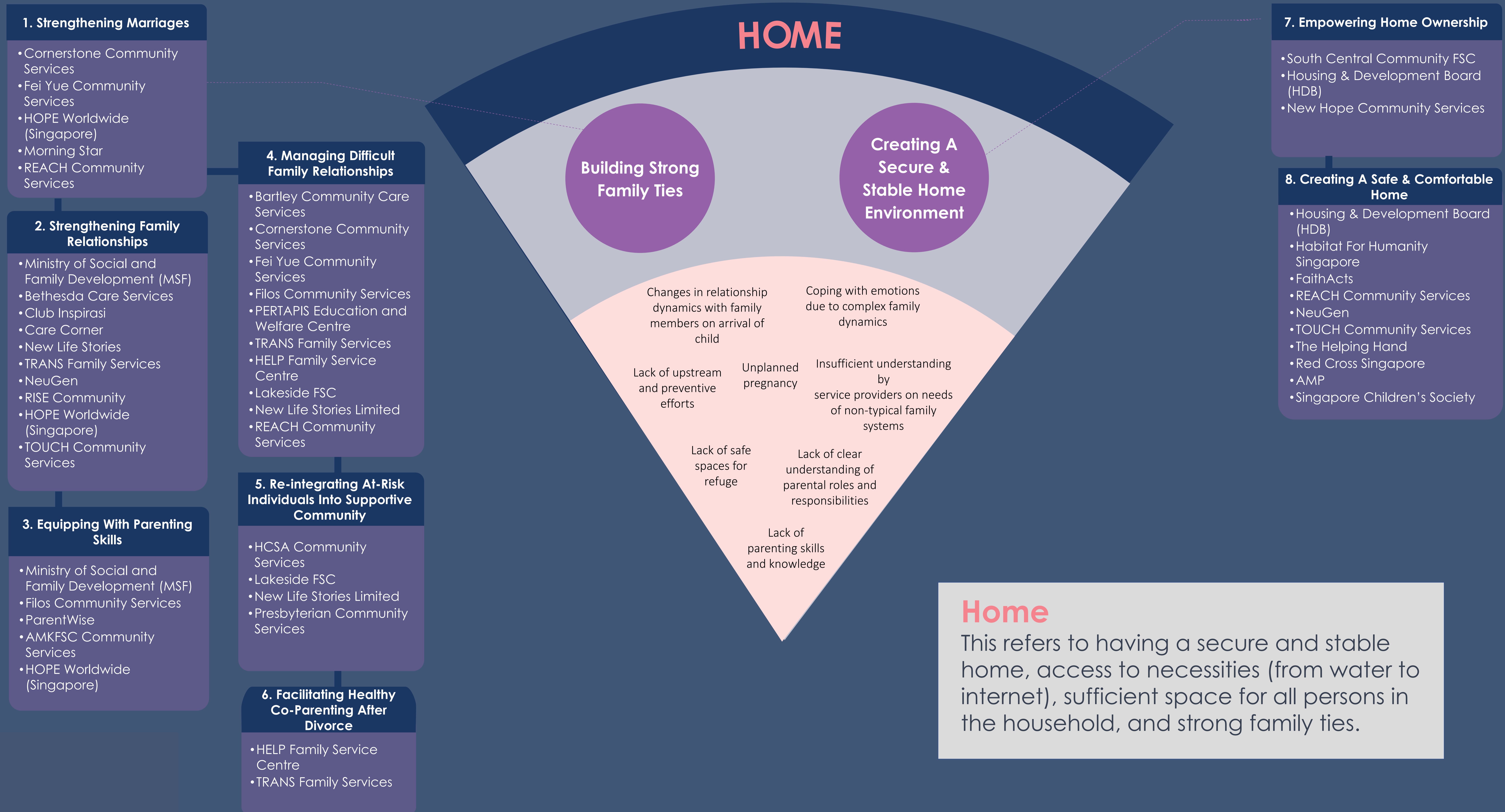
**Community Foundation of Singapore
A Greater Gift**
Encouraging partnerships and collaboration with external organisations and assisting issue champions in ensuring sustainable development.
<https://legacygiving.sg/leave-a-greater-gift/>

**SHINE Children and Youth Services
Community Social Work**
Engaging, developing and mobilising Children, Youth and Communities, with the purpose of maximising Children and Youth potential. This includes Family coaching and Collective Impact programmes
<https://www.shine.org.sg/communitysw>

**HELP Family Service Centre
Big Brother Big Sister (BBBS)**
Aims to reach out to children from divorcing and divorced families between the ages of 7 -16 years old, through befriending with Caring volunteers (BIGS) who meet the children and youths regularly for group activities to share interests, hobbies, life skills and develop their friendship.
<https://helpfsc.org.sg/big-brother-big-sister-bbbs/>

**New Life Stories
Befriending**
Trained volunteers (Learning Friends) visit the homes of our children every week to mentor and read to them. During this time, our Learning Friends engage the child to not only coach them through creative activities and play, but also build on their confidence.
<https://www.newlifestories.org.sg/family-strengthening-programme>

+
Befriending
Trained volunteers (Learning Friends) visit the homes of children with incarcerated parents every week to mentor and read to them.
<https://www.newlifestories.org.sg/family-strengthening-programme>



HOME

1. Strengthening Marriages

Cornerstone Community Services Marriage preparation programme
The Prevention and Relationship Education Programme (PREP®) is a sophisticated research-based marriage enrichment programme with proven results of low rates of premarital break-up and post marital divorce. Through interactive activities and discussions conducted by PREP® trained counsellors, participants are empowered with the tools for building a successful marriage at the 12-hour workshop.
<https://www.cornerstoneservices.org.sg/family-support>

Fei Yue Community Services Prevention and Relationship Enhancement Programme Online (ePREP)
ePREP is an e-learning version of PREP, an evidence-based marriage preparation programme based on 40 years of research. It consists of 6 self-paced learning modules to be completed over 3 months. It aims to help soon-to-wed and newlywed couples (below 2 years) to improve communication and develop better conflict resolution skills.
<https://fvcs.org/marriage/>

Prepare Enrich Marriage Enrichment Programme (PE MEP)
Our PE MEP uses the Prepare Enrich assessment and framework to identify your strengths and build your confidence in your relationship skills. Conducted in a small group setting, it allows couples of different ages and stages to learn from one another and normalise some challenges we commonly experience in marriage.
<https://fvcs.org/marriage/>

Marriage Support Services for Young Couples
Early Marriage Support Programme (EMS) aims to help young couples (where at least one applicant is below 21 years old or if the groom is between 18-24 years old) gain a better understanding of each other, acquire practical skills to enrich their family lives, and build strong and lasting marriages.
<https://fvcs.org/marriage/>

Groupwork and Tailored Marriage Preparation Programmes
Fei Yue also offers a facilitator led 12-hour groupwork based on PREP and tailored marriage preparation programmes based on Prepare Enrich for couples who would like to have a deeper discussion on issues specific to them. Topics include communication, conflict management, commitment, friendship, sensuality, problem-solving, among others.
<https://fvcs.org/marriage/>

HOPE Worldwide (Singapore) Marriage Workshops
Strengthening and empowering families through our family life education initiatives, such as parenting, marriage/relationships and work-life balance workshops. We also assist to provide immediate help to vulnerable families in collaboration with community partners and different volunteer groups through our community outreach programmes.
<https://www.hopewwsea.org/hope-for-families/>

Morning Star Marriage PREP 8.0
Helping courting couples and married couples to resolve issues and improve their relationships.
<https://www.morningstar.org.sg/marriage-prep/>

REACH Community Services Marriage Preparation Programme
For engaged couples or couples to be married, 4 weekly sessions.
<https://reach.org.sg/services/counselling-service/mppl/>

2. Strengthening Family Relationships

Ministry of Social and Family Development (MSF) Families for Life
The FFL Movement rallies like-minded individuals, families and organisations to strengthen family bonds through large-scale events, national celebrations and online digital campaigns.
<https://www.msf.gov.sg/about-MSF/our-organisation/Statutory-Boards-and-Councils/Councils-under-MSF/Pages/Families-for-Life.aspx>

Bethesda Care Services Family Connect
Bonding activities and experiential workshops to promote family cohesiveness among underprivileged families. Targets LIF with young children to bond parents and children and exchange parenting tips with other parents.
<https://bethesdacare.sg/services-family/family-connect/>

Club Inspirasi
Couples can gain skills and knowledge to manage challenges and strengthen family life through interactive couples and/or family activities.
<https://ppls.sg/inspirasi/>

Hope Community Services Centre, Lions Befrienders Parents Plus
The Parents Plus programmes are evidence-based workshops that equip parents with skills in building satisfying relationships and managing emotional and behavioural issues with their children.
<https://www.filos.sg/services-family>

Care Corner Circle of care
Social workers work with educational therapists, health specialists, teachers and principals to form an interdisciplinary team that meets regularly and works to shore up a child's confidence, skills and learning abilities. The COC professionals also engage parents as partners to help them help themselves and their child.
<https://www.lienfoundation.org/project/circle-of-care>

New Life Stories Family Advocacy and Care
Each family is supported by our therapists and go through a therapeutic and developmental journey which includes family counselling, play therapy and case work management. Home visits are also conducted once a month.
<https://www.newlifestories.org.sg/family-strengthening-programme>

TRANS Family Services Children-in-Between (CiB)
Specially curated programmes for parents and children who have undergone divorce with the aim to provide safe space to explore, understand and cope better with the various challenges brought about by divorce.
<https://www.trans.org.sg/services-famfsc>

NeuGen Birthday Celebration
Allows families who may not have the means to celebrate their children's birthdays as these are important to their development and well-being. Cakes, gifts, and food are provided so that families can create happy memories with one another.
<https://www.neugen.org.sg/neu-empowerment-model/>

Festive Celebration
Allows families who may not have the means to celebrate festive occasions with their families. Food and groceries are provided so that families can create happy memories with one another.
<https://www.neugen.org.sg/neu-empowerment-model/>

RISE Community Men's Transformation Programme
Enable men to manage life stressors in positive ways so as to contribute to stable families and society.
<https://www.giving.sg/web/rise-community-limited>

HOPE Worldwide (Singapore) Family Bonding Activities
strengthening and empowering families through our family life education initiatives, such as parenting, marriage/relationships and work-life balance workshops. We also assist to provide immediate help to vulnerable families in collaboration with community partners and different volunteer groups through our community outreach programmes.
<https://www.hopewwsea.org/hope-for-families/>

TOUCH Community Services TOUCH Family Support
We provide mentorship & intervention to the help the vulnerable families in the following areas: upskilling, short-term assistance, home improvements, financial planning, counselling, family bonding etc.
<https://www.touch.org.sg/about-touch/our-services/touch-family-support-homepage>

3. Equipping With Parenting Skills

Ministry of Social and Family Development (MSF) The Positive Parenting Programme (Triple P)
The Positive Parenting Programme (Triple P) is an evidence-based programme that equips parents with techniques to promote their children's (aged up to 16 years) psychological, social and emotional competence. The programme is delivered through MSF-appointed Parenting Support Providers.
<https://www.msf.gov.sg/policies/Strong-and-Stable-Families/Supporting-Families/Pages/Parenting.aspx>

Filos Community Services Parents Plus Programmes
The Parents Plus programmes are evidence-based workshops that equip parents with skills in building satisfying relationships and managing emotional and behavioural issues with their children.
<https://www.filos.sg/services-family>

ParentWise WiseJourneys
ParentWise is a community movement to nurture a generation of confident parents and those involved in the future of our children. WiseJourneys has 4 Zoom sessions on collective learning and problem-solving amongst parents and caregivers journeying together.
<https://parentwise.sg/wise-journey>

AMKFSC Community Services Celebrating Mothers
Celebrating Mothers groupwork supports single mothers who perform double parenting roles within the community.
<https://www.amkfsc.org.sg/what-we-do/family-services/family-service-centres/ang-mo-kio-fsc>

HOPE Worldwide (Singapore) Parenting Workshops
Strengthening and empowering families through our family life education initiatives, such as parenting, marriage/relationships and work-life balance workshops. We also assist to provide immediate help to vulnerable families in collaboration with community partners and different volunteer groups through our community outreach programmes.
<https://www.hopewwsea.org/hope-for-families/>

4. Managing Difficult Family Relationships

Bartley Community Care Services BCCS HOPE Programme
HOPE programme seeks to help families struggling with unemployment, parenting issues, financial difficulties, interpersonal relationships, and broken marriages. We provide life skills training, counselling & guidance, financial and crisis management workshops. We also offer child befriending/mentoring services & academic assistance to at-risk children.
<https://www.bccs.org.sg/hope-program>

Cornerstone Community Services Counselling
We provide professional counselling services to help families and couples work through conflicts. Our counsellors practise an integrated approach to help individuals to identify strengths and develop strategies to manage life issues.
<https://www.cornerstoneservices.org.sg/family-support>

Fei Yue Community Services Counselling
We help individuals, couples and families understand the issues they are experiencing, exploring ways to resolve these issues to improve their family issues and relationships.
<https://fvcs.org/family/>

Filos Community Services Counselling services
Filos provides counselling services for individuals, married couples and families.
<https://www.filos.sg/services-assistance>

PERTAPIS Education and Welfare Centre Counselling & Guidance
Offers guidance on parenting children and youth in these areas: Child's Management, Adolescent Conflicts, Youth at Risk
<https://www.pertapis.org.sg/support-programs>

TRANS Family Services Casework & Counselling
Family and relationship difficulties.
<https://www.trans.org.sg/services-famfsc>

HELP Family Service Centre RAINBOWS
RAINBOWS is a peer support programme for children and adults who have experienced death, divorce, separation and abandonment.
<https://helpfsc.org.sg/rainbows/>

Children in Between (CIB)
Evidence-based programme developed by child experts to meet the needs of the parents and children. The parent component highlights ways in which children can be caught in the middle of their parents' conflict. The child component is a skills-based programme to equip children with the necessary skills to cope with their feelings.
<https://helpfsc.org.sg/services-programmes/divorce-support-specialist-programmes/>

Lakeside FSC Casework and Counselling
For individuals and families, we provide casework and counselling, linking them to the resources available in the community and other agencies. Social workers help mend marital and parenting relationships, provide financial assessment and aid.
<https://lakeside.org.sg/our-services/casework-and-counselling/>

New Life Stories Limited Incare (Dear Papa/ Mama)
Therapists conduct a course to help rebuild incarcerated parents' relationships with children. This includes Family Joint Visits, parents sharing messages of encouragement and love through writing short stories to their children.
<https://www.newlifestories.org.sg/family-strengthening-programme>

REACH Community Services Syariah Court Mandatory Counselling Programme
Counselling services for couples facing a wide range of challenges and issues in their marriage. These might include infidelity, financial issues, family violence, communication issues, employment issues that lead to the inability to provide for the family, and issues with in-laws. We also facilitate the Parenting Plan with couples who decide to go their separate ways, to prepare parents for their post-divorce journey while prioritizing their children's best interests.
<https://reach.org.sg/services/counselling-service/additional-services/>

Couple Counselling
Dealing with: Pre-marital Relationships, Marital Relationships, Extra-marital affairs
<https://reach.org.sg/services/counselling-service/counselling/>

Family Counselling
Dealing with: Family Relationships, Grief, Growth and Healing
<https://reach.org.sg/services/counselling-service/counselling/>

Couple Mediation
Conflict resolution services for couples and families. We help individuals take responsibility to change their way of thinking and behaviour in a way that leads to a more meaningful living and psychological wellbeing.
<https://reach.org.sg/services/counselling-service/mediation/>

5. Re-integrating At-Risk Individuals Into SupportiveCommunity

HCSA Community Services HCSA Highpoint Halfway House
Transitional living programme to help former drug offenders rebuild broken lives, provide a safe and substance free place for homeless male ex-offenders, newly released prisoners and those in recovery from addiction. Aims to help its residents attain permanent housing, employment and financial independence to reintegrate into society.
<https://hcsa.org.sg/programmes/hcsa-highpoint/>

Lakeside FSC Prison Support Services
We foster reconciliation, restoration, and reintegration by inspiring hope, reconnecting families, and journeying with them through challenging times. This includes televisitiation sessions, Family Resource Center, Release Preparation Programme and Case Management Service.
<https://lakeside.org.sg/our-services/prison-support-services/>

Problem Gambling
Equips problem gamblers and affected family members with the knowledge to stay away from gambling and encourages strengthening of family relationships through counselling, family programmes and bonding activities. Organises quarterly talks by invited speakers.
<https://lakeside.org.sg/our-services/problem-gambling/>

New Life Stories Limited Family Advocacy and Care
Whole family system approach to reintegration of ex-offenders. Includes family counselling, play therapy and case work management.
<https://www.newlifestories.org.sg/family-strengthening-programme>

Presbyterian Community Services Gladiolus Place
Christian healing home dedicated to help teenage girls and their families work through challenging situations, giving hope and direction in their lives.
<https://www.gladiolusplace.org.sg/>

HOME

6. Facilitating Healthy Co-Parenting After Divorce

HELP Family Service Centre Casework and Counselling

For divorcing and divorced families to help them cope with their divorce or separation. The main focus is to facilitate their emotional recovery from the loss and continuing parenting and co-parenting roles.

<https://helpfsc.org.sg/casework-counselling/>

+

Family Enrichment Programme (FEP)

This programme aims to provide opportunities for interaction among divorcing and divorced families to widen their support network. Through organised activities like family outings, workshops and sharing sessions, parents and children will find greater emotional comfort from one another and learn better coping skills to their life changes.

<https://helpfsc.org.sg/family-youth-enrichment-fye/>

+

Mandatory Co-Parenting Programme (CPP)

Consultation session for divorcing parents with minor children. Helps divorcing parents make informed decisions regarding financial, housing and parenting issues that prioritise the child's well-being.

<https://helpfsc.org.sg/services-programmes/divorce-support-specialist-programmes/>

+

Parenting PACT (Court's Referral)

Two-hour one-time group session for divorced parents with children below 21 years old. To help parents to understand the impact of divorce on their children, learn effective co-parenting strategies and practise self-care post-divorce.

<https://helpfsc.org.sg/services-programmes/divorce-support-specialist-programmes/>

TRANS Family Services

Co-Parenting Programme

An individual consultation programme for parents with dependent children below the age of 21 years who are planning to initiate divorce process. The programme aims to highlight the impact of divorce on all family members especially children to create possibilities for better adjustments and communications in the face of challenges and to minimise the adverse effect of divorce on children.

<https://www.trans.org.sg/services-famfsc>

+

Mandatory Parenting Programme [MPP]

Group based programme for Mandarin speaking parents of children below 21 years who are planning to initiate divorce.

<https://www.trans.org.sg/services-famfsc>

7. Empowering Home Ownership

South Central Community FSC

Keystart Home Ownership Programme

Keystart supports these families with young children who have home ownership aspirations through funding starting costs, renovation etc.

<https://scfsc.sg/pages/keystart-home-ownership-programme>

Housing & Development Board (HDB)

Fresh Start Housing Scheme

The Fresh Start Housing Scheme (Fresh Start) aims to help second-timer families with young children, who are currently living in public rental flats to own a 2-room Flexi flat.

<https://www.hdb.gov.sg/residential/buying-a-flat/buying-procedure-for-new-flats/application/fresh-start-housing-scheme>

New Hope Community Services

Hope Scheme

Displaced community matching for flats.

<https://www.newhopecs.org.sg/hope-scheme>

8. Creating A Safe & Comfortable Home

Housing & Development Board (HDB)

EASE Programme

Installs improvement items in HDB flats through EASE to make it more elderly-friendly, and improve mobility and comfort for elderly residents.

<https://www.hdb.gov.sg/residential/living-in-an-hdb-flat/for-our-seniors/ease>

Habitat For Humanity Singapore

Project Homeworks

The programme entails decluttering items that pose a fire risk or could cause accidents like falls. Homes are also made cleaner by discarding expired food items and clearing pest-infested furniture to improve the health and well-being of our vulnerable elderly and families.

<https://www.habitat.org.sg/project-homeworks>

FaithActs

Home Wellness

Ensuring seniors are safe at home through decluttering, cleaning and repairs. In some cases, it may include fumigation, painting and refurbishing with basic furniture and equipment.

<https://www.faihtacts.org.sg/services/community-outreach/home-wellness>

REACH Community Services

Home Improvement Programme

The Home Improvement Programme seeks to assist low-income families in enhancing their home environment through active participation in decision-making. With the help and contribution of volunteers and caseworkers, participants will be empowered to make informed decisions to improve their living conditions in both the short and long term.

<https://reach.org.sg/services/family-service/community-work>

NeuGen

Living Environment Assistance Project (LEAP)

Aims to improve the home environment for children and families so that they may have a safe space to study and reside in.

<https://www.neugen.org.sg/neu-empowerment-model/>

TOUCH Community Services

Project Aspire

Project Aspire aims to provide resources and support in creating a better home environment for low-income families. Improvement of lives for low-income families to achieve social mobility. To assist in the disposal of unwanted items in the households and packing with the help of volunteers.

<https://touch.org.sg/getinvolved/detail?ID=4e724e74-0946-ed11-bba3-000d3a85627d>

The Helping Hand

Pass-It-On

The project seeks to provide a meaningful way to distribute unwanted, albeit useful items to benefit the needy (home appliances, home furniture, medical aids, mobility aids, learning aids & etc).

<https://thehelpinghand.org.sg/pass-it-on>

Red Cross Singapore

HoME+

Home monitoring system using sensors, to notify Red Cross call centre when unusual patterns are detected or panic button is activated by user. This allows community responders or SCDF to be dispatched promptly when needed.

<https://www.redcross.sg/get-assistance/home.html>

AMP

Home Access Programme

To support low-income family with affordable home internet connectivity. Eligible Singaporean families can enjoy two years of subsidised fibre broadband connectivity, with an option to bundle with a tablet or smartphone.

<https://www.amkfsc.org.sg/what-we-do/family-services/family-service-centres/ang-mo-kio-fsc>

Singapore Children's Society

Adoption Facilitation Service Project

Seeking stable and permanent homes for children to be adopted. Develop and provide post-adoption support programmes to support the building and strengthening of relationships in new families.

<https://www.childrensociety.org.sg/services/vulnerable-children-and-youth>