

Directions To NVPC (Updated 2026)

6 Eu Tong Sen St, #04-88 The Central, Singapore 059817

1. From **Clarke Quay MRT Station** – access office from Clarke Quay Central mall's Blue Zone.
2. By **taxi** – drop-off at taxi stand D12.
3. By **car** – parking in Clarke Quay Central carpark levels 5-8.
4. For **large deliveries** - drive to Basement 1.

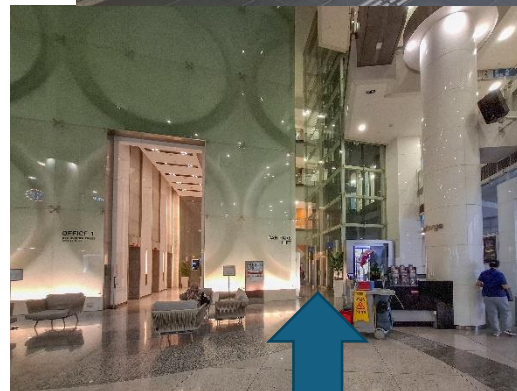
1. From Clarke Quay MRT Station – access office from Clarke Quay Central mall's Blue Zone

After exiting the ticket gates, turn left and walk straight.

Turn right and go up to the main entrance of Clarke Quay Central on Level 1.

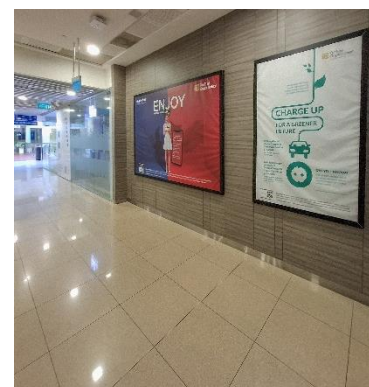
Enter the mall and walk towards the Blue Zone.

Find the lift lobby **with blue signs** labelled “**CAR PARK LIFT**” closest to the concierge counter.



Take the lift to Level 4.

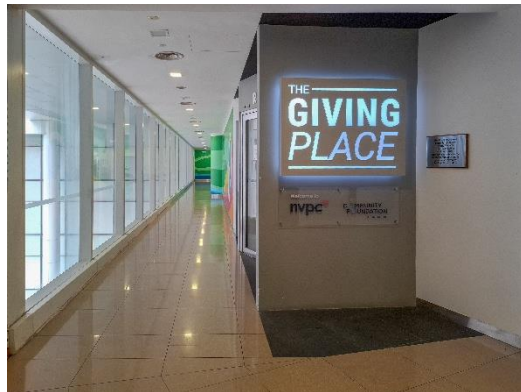
Turn left and walk down the corridor.



Turn right into the corridor,
just before the escalator and
walk straight.



You will see a sign that reads
"The Giving Place".



Continue walking to the end
of the corridor to reach NVPC.

Welcome to NVPC!

Please press the call icon on
the door access biometric
reader, or phone
[+65 6550 9595](tel:+6565509595) or your host.



**Press
the
call
icon**

2. By taxi – drop-off at taxi stand D12

From Eu Tong Sen Street, turn left into **Tew Chew Street**.



Paradox Singapore Merchant Court hotel will be on your left.

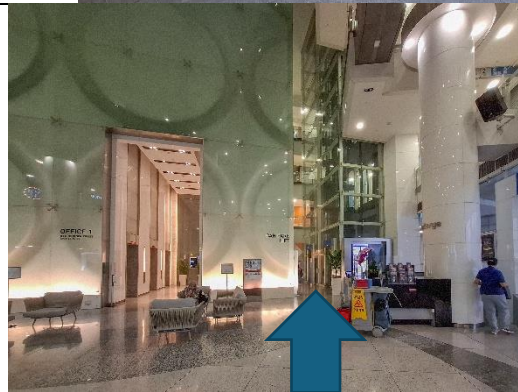
Go straight and make a U-turn.



Ask the taxi driver to drop you off at **Taxi Stand D12** (Tew Chew Street, near Subway).



Find the lift lobby **with blue signs** labelled "**CAR PARK LIFT**" closest to the concierge counter.



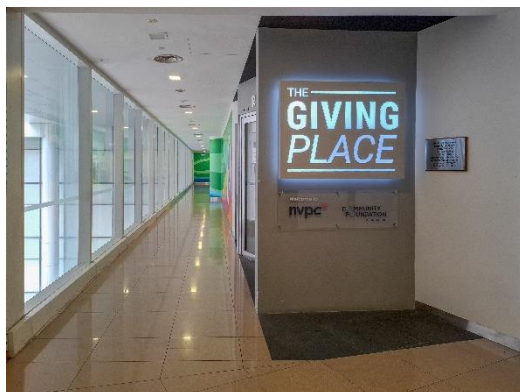
Take the lift to Level 4.

Turn left and walk down the corridor.



Turn right into the corridor, just before the escalator and walk straight.

You will see a sign that reads **"The Giving Place"**.



Continue walking to the end of the corridor to reach NVPC.





Welcome to NVPC!

Please press the call icon on the door access biometric reader, or phone [+65 6550 9595](tel:+6565509595) or your host.



**Press
the
call
icon**

3. By car – parking at Clarke Quay Central carpark levels 5-8

<p>From Eu Tong Sen Street, turn left into Tew Chew Street.</p>	
<p>Paradox Singapore Merchant Court hotel will be on your left. Go straight and make a U-turn.</p>	
<p>Enter the Clarke Quay Central mall multi-storey carpark on your left.</p>	
<p>Parking is on levels 5 to 8. Find the Blue Zone Car Park Lift and take it down to Level 4.</p>	

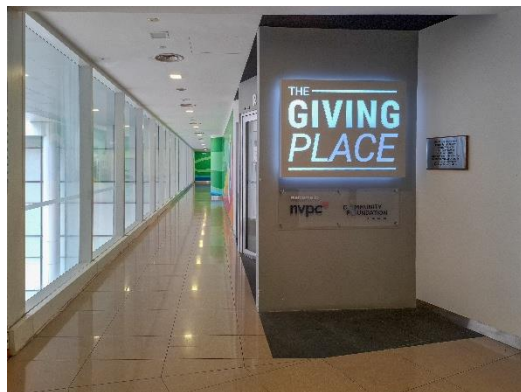
Turn left and walk down the corridor.



Turn right into the corridor, just before the escalator and walk straight.



You will see a sign that reads **"The Giving Place"**.



Continue walking to the end of the corridor to reach NVPC.

Welcome to NVPC!




Please press the call icon on the door access biometric reader, or phone [+65 6550 9595](tel:+6565509595) or your host.



**Press
the
call
icon**

4. For large deliveries – drive to Basement 1

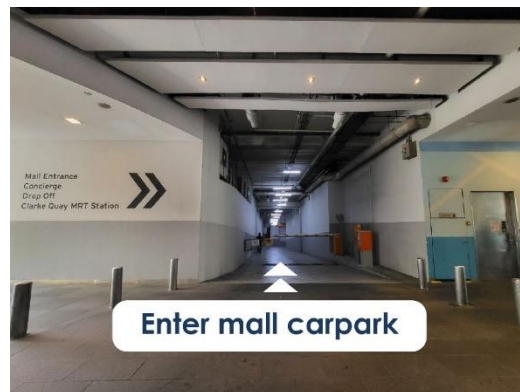
These directions are for large deliveries requiring a vehicle and cargo lift access. For smaller deliveries that can be hand-carried, see section 3.

<p>From Eu Tong Sen Street, turn left into Tew Chew Street.</p>	
<p>Paradox Singapore Merchant Court hotel will be on your left. Go straight and make a U-turn.</p>	
<p>Enter the Clarke Quay Central mall multi-storey carpark on your left.</p> <p>The carpark entrance is opposite the hotel</p>	

Turn left when you see the CARPARK 5F sign.



Drive **down** the slope into Clarke Quay Central mall Basement 1.

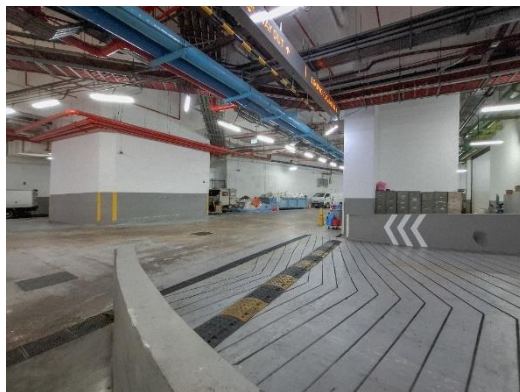


Note: the Fire Command Centre (metal door) will be on your right.

Do check in with the Fire Command Centre for directions or guidance if needed.



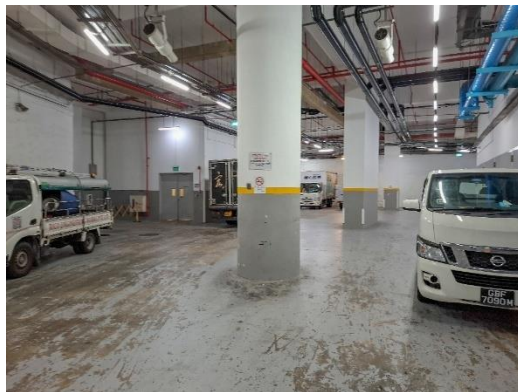
At the end of the slope, turn right to the loading/unloading area.



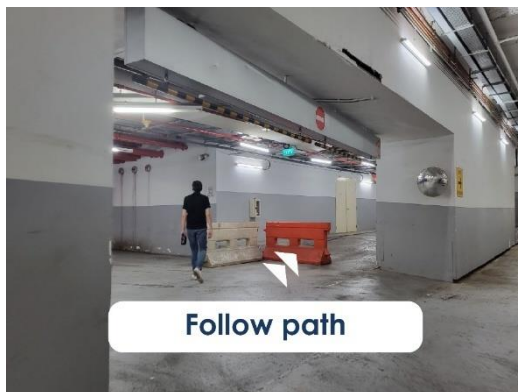
Drive towards loading/unloading area and locate the temporary parking spots.



Load / unload your items.

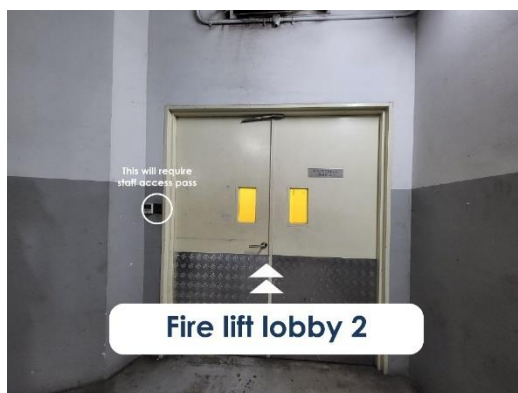


Proceed to move your trolley or items towards FIRE LIFT LOBBY 2 (SOHO 2).

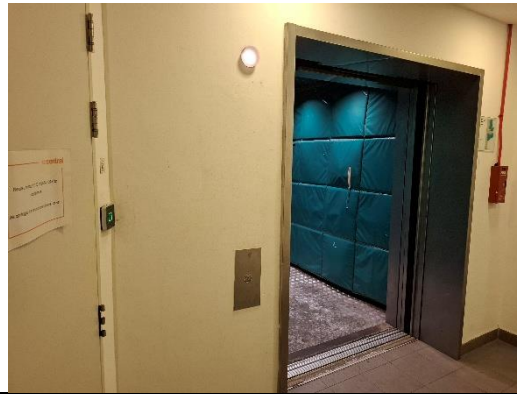


Fire Lift Lobby 2 (Soho 2)

At the Fire Lift Lobby 2 (Soho 2) doors, you will require an NVPC staff member to tap you in with a staff access pass.



Now enter the cargo lift. Press 3 and you will arrive at NVPC's cargo lift entrance.



- End of document -